



coffee

LOVERAMICS



contents

our brand

- latte art

- egg new glaze
- twisted glass
- bond new colours
- tulip

- brewers

- flatbed dripper new
- glass jug with lid
- 100ml glass jug
- coffee dripper and stand
- gold dripper set - 2023 special edition new
- jugs and tasting cups
- embossed tasting cups

- nomad

- champions signature

- dale harris new glaze

- roasters

- er-go! system

A photograph of a retail display for 'LOVERAMICS'. The background is a light-colored brick wall. Numerous oval-shaped ceramic plates in various colors (peach, orange, cream, grey) are mounted on the wall using small metal brackets. Several white, cone-shaped pendant lights hang from the ceiling. In the foreground, a long wooden table displays a variety of ceramic dishes, including bowls, cups, and plates, some in dark blue and others in neutral tones. A semi-transparent dark grey banner is overlaid on the bottom half of the image, containing the brand name and a tagline.

LOVERAMICS

a love for ceramics

Loveramics is an internationally recognised ceramics brand, synonymous with quality and craftsmanship. At Loveramics, we're breaking the proverbial mould on pottery. Shattering stereotypes on classical and formal approaches, through stylish contemporary designs where our passion is evident in every piece.



brand mission

We provide well designed professional coffee and tableware to food loving customers in an artisanal environment with a professional voice. Helping them feel like proud owners of highest quality ceramics.



egg professional coffee cups

Designed and crafted to the smallest details, our coffee cups allow every specialty coffee to develop its full flavour well with the best quality meeting the demands of coffee lovers and baristas.



300ml

Café Latte Cup & Saucer
Choice of World Latte Art Championship,
biggest area for latte art

200ml

Cappuccino Cup & Saucer
most used in professional
coffee house, strong ratio
of coffee / milk

80ml

Espresso Cup & Saucer
single or double
espresso

250ml

Cappuccino Cup & Saucer
Most used in professional
coffee house, smooth ratio
of coffee / milk

150ml

Flat White Cup & Saucer
The standard size of flat
white

Thickest possible
wall keeps coffee at
right temperature

Ergonomic handle and saucer to
ensure an aesthetic balance

Rounded inside profile
allows a fuller flavour
to develop

Very dense body (<0.5% absorption
rate); commercial grade high fired
coloured porcelain at 1300°c

regular colours



brown



red



yellow



mint



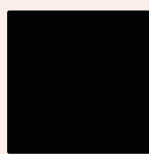
teal



river blue



denim



black

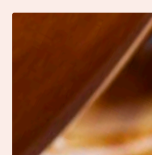


taupe

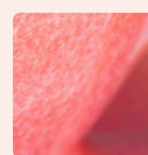


white

potters colours



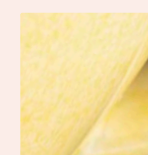
caramel



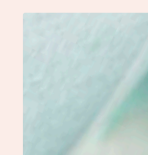
berry



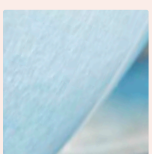
rose



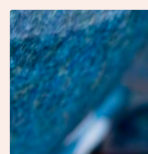
butter cup



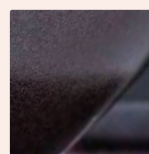
basil



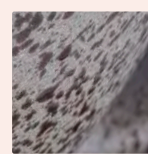
ice blue



night sky



gunpowder



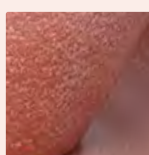
granite



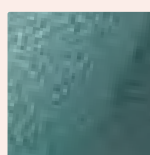
ivory

NEW

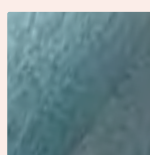
mineral colours



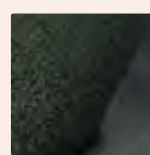
cinnabar



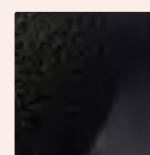
emerald



glacier



forest



anthracite

new matte glazes inspired by nature

Inspired by 5 natural habitats during our travels, we decide to dedicate the new 5 colours to natural habitats. Feature 5 new glazes in earthy, neutral tone, they would compliment interior trends of 2023 with ease.

The 5 new colours are made in the same, uber durable Loveramics body.

2023
NEW GLAZE





5 new potters colours in matte reactive glaze provides a different look to our existing range. They are also sought after colours for the latest interior design trends.



5 sizes available for you to prepare every perfect brew.



featuring a natural colour tone in matte, the runny nature of the colours make every piece unique. They are all microwave, dishwasher, freezer and oven safe.



a functional round base, it could help to create turbulence when brewing so as to enhance the aromas and tastes of coffee to a perfect balance.



perfect match with twisted glass

5 new glazes in earthy, neutral tone in matte.



5 sizes, 5 new matte colours to choose from



- C088-161BCI
- C088-162BEM
- C088-163BGA
- C088-164BFO
- C088-165BAN

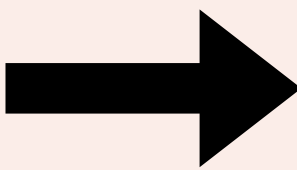
Café Latte Cup (Box of 6)
L13.5 x W11.0 x H6.5 cm
vol: 300ml wt: 363 g



- C088-166BCI
- C088-167BEM
- C088-168BGA
- C088-169BFO
- C088-170BAN

Cappuccino Cup (Box of 6)
L12.5 x W10.0 x H6.0 cm
vol: 250ml wt: 310 g

saucer



- C088-186BCI
- C088-187BEM
- C088-188BGA
- C088-189BFO
- C088-190BAN

Shared Saucer (Box of 6)
L15.5 x W15.5 x H2.5 cm
wt: 280 g



- C088-171BCI
- C088-172BEM
- C088-173BGA
- C088-174BFO
- C088-175BAN

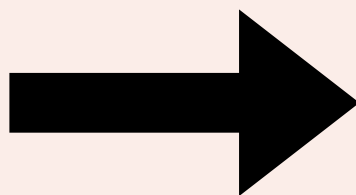
Cappuccino Cup (Box of 6)
L11.5 x W9.5 x H5.5 cm
vol: 200ml wt: 254 g



- C088-176BCI
- C088-177BEM
- C088-178BGA
- C088-179BFO
- C088-180BAN

Flat White Cup (Box of 6)
L11.0 x W9.0 x H5.0 cm
vol: 150ml wt: 250 g

saucer



- C088-191BCI
- C088-192BEM
- C088-193BGA
- C088-194BFO
- C088-195BAN

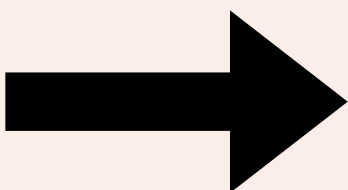
Shared Saucer (Box of 6)
L14.5 x W14.5 x H2.5 cm
wt: 254 g



- C088-181BCI
- C088-182BEM
- C088-183BGA
- C088-184BFO
- C088-185BAN

Espresso Cup (Box of 6)
L8.5 x W6.5 x H5.5 cm
vol: 80ml wt: 150 g

saucer



- C088-196BCI
- C088-197BEM
- C088-198BGA
- C088-199BFO
- C088-200BAN

Espresso Saucer (Box of 6)
L11.5 x W11.5 x H2.0 cm
wt: 140 g



freezer safe



dishwasher safe



microwave safe



oven safe
220C max



egg

potters colours



caramel



berry



rose



butter cup



basil

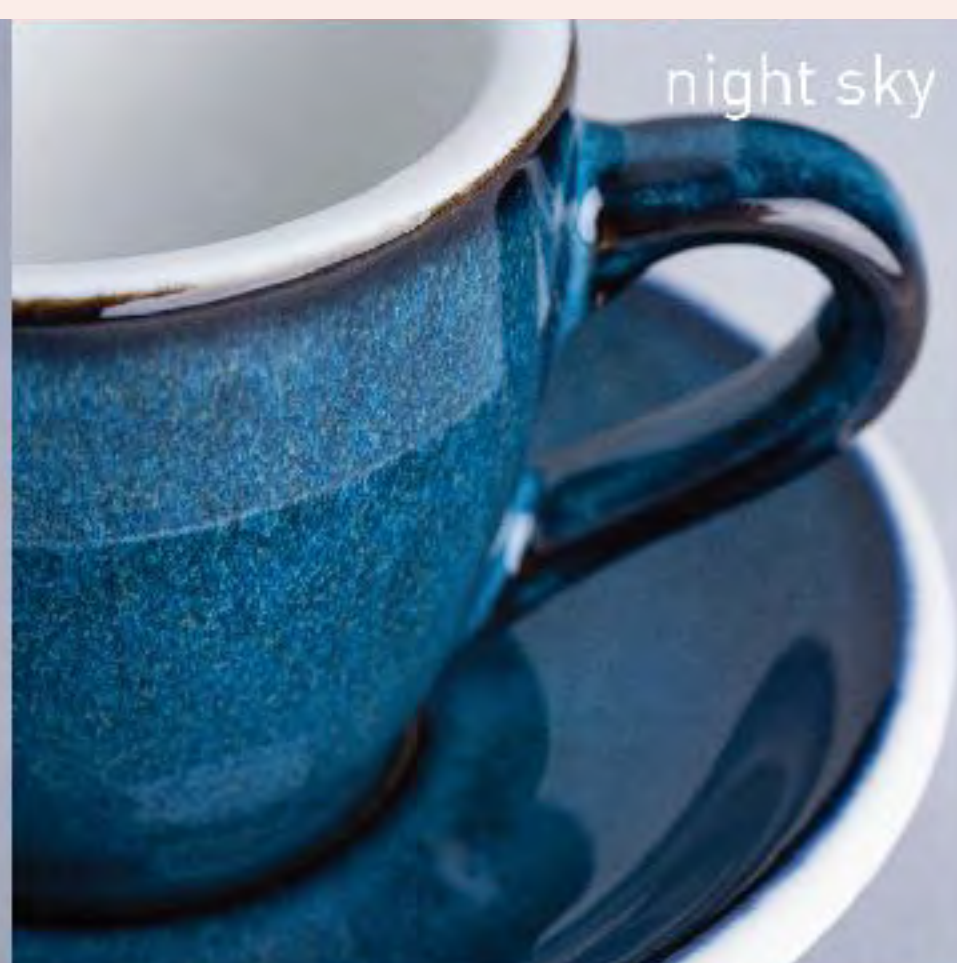
what are potters colours?

They are made out of 2 or more types of glazes together. Because they all have different properties, such as flow rate, melting temperature and colours, particularly the workmanship of hand-dipping, they all look slightly varied.

These are effects we highly prized, from every crystal growth, speckling spots, layering and flow separation, we are proud of the artisanal look we offer.



ice blue



night sky



gunpowder



granite



ivory

5 sizes, 10 potters colours to choose from



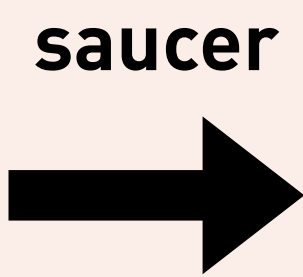
- C088-66BCA
- C088-107BBE
- C088-108BRO
- C088-109BBC
- C088-110BBI
- C088-111BIB
- C088-106BNS
- C088-70BGU
- C088-68BGL
- C088-105BIV

Café Latte Cup (Box of 6)
L13.5 x W11.0 x H6.5 cm
vol: 300ml wt: 363g



- C088-102BCA
- C088-114BBE
- C088-115BRO
- C088-116BBC
- C088-117BBI
- C088-118BIB
- C088-113BNS
- C088-104BGU
- C088-103BGL
- C088-112BIV

Cappuccino Cup (Box of 6)
L12.5 x W10.0 x H6.0 cm
vol: 250ml wt: 310g



- C088-67BCA
- C088-142BBE
- C088-143BRO
- C088-144BBC
- C088-145BBI
- C088-146BIB
- C088-141BNS
- C088-71BGU
- C088-69BGL
- C088-140BIV

Shared Saucer (Box of 6)
L15.5 x W15.5 x H2.5 cm
wt: 280g



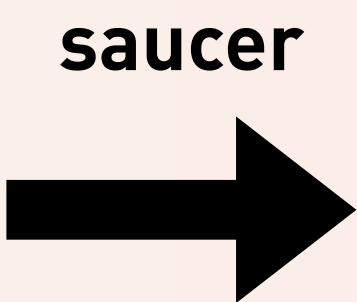
- C088-74BCA
- C088-121BBE
- C088-122BRO
- C088-123BBC
- C088-124BBI
- C088-125BIB
- C088-120BNS
- C088-78BGU
- C088-76BGL
- C088-119BIV

Cappuccino Cup (Box of 6)
L11.5 x W9.5 x H5.5 cm
vol: 200ml wt: 254g



- C088-81BCA
- C088-128BBE
- C088-129BRO
- C088-130BBC
- C088-131BBI
- C088-132BIB
- C088-127BNS
- C088-83BGU
- C088-82BGL
- C088-126BIV

Flat White Cup (Box of 6)
L11.0 x W9.0 x H5.0 cm
vol: 150ml wt: 250g



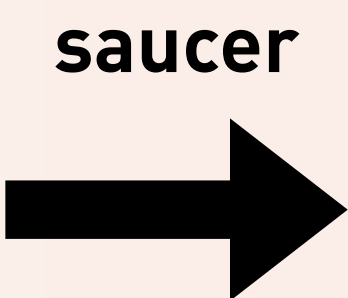
- C088-75BCA
- C088-149BBE
- C088-150BRO
- C088-151BBC
- C088-152BBI
- C088-153BIB
- C088-148BNS
- C088-79BGU
- C088-77BGL
- C088-147BIV

Shared Saucer (Box of 6)
L14.5 x W14.5 x H2.5 cm
wt: 254g



- C088-86BCA
- C088-135BBE
- C088-136BRO
- C088-137BBC
- C088-138BBI
- C088-139BIB
- C088-134BNS
- C088-90BGU
- C088-88BGL
- C088-133BIV

Espresso Cup (Box of 6)
L8.5 x W6.5 x H5.5 cm
vol: 80ml wt: 150g



- C088-87BCA
- C088-156BBE
- C088-157BRO
- C088-158BBC
- C088-159BBI
- C088-160BIB
- C088-155BNS
- C088-91BGU
- C088-89BGL
- C088-154BIV

Espresso Saucer (Box of 6)
L11.5 x W11.5 x H2.0 cm
wt: 140g



freezer safe



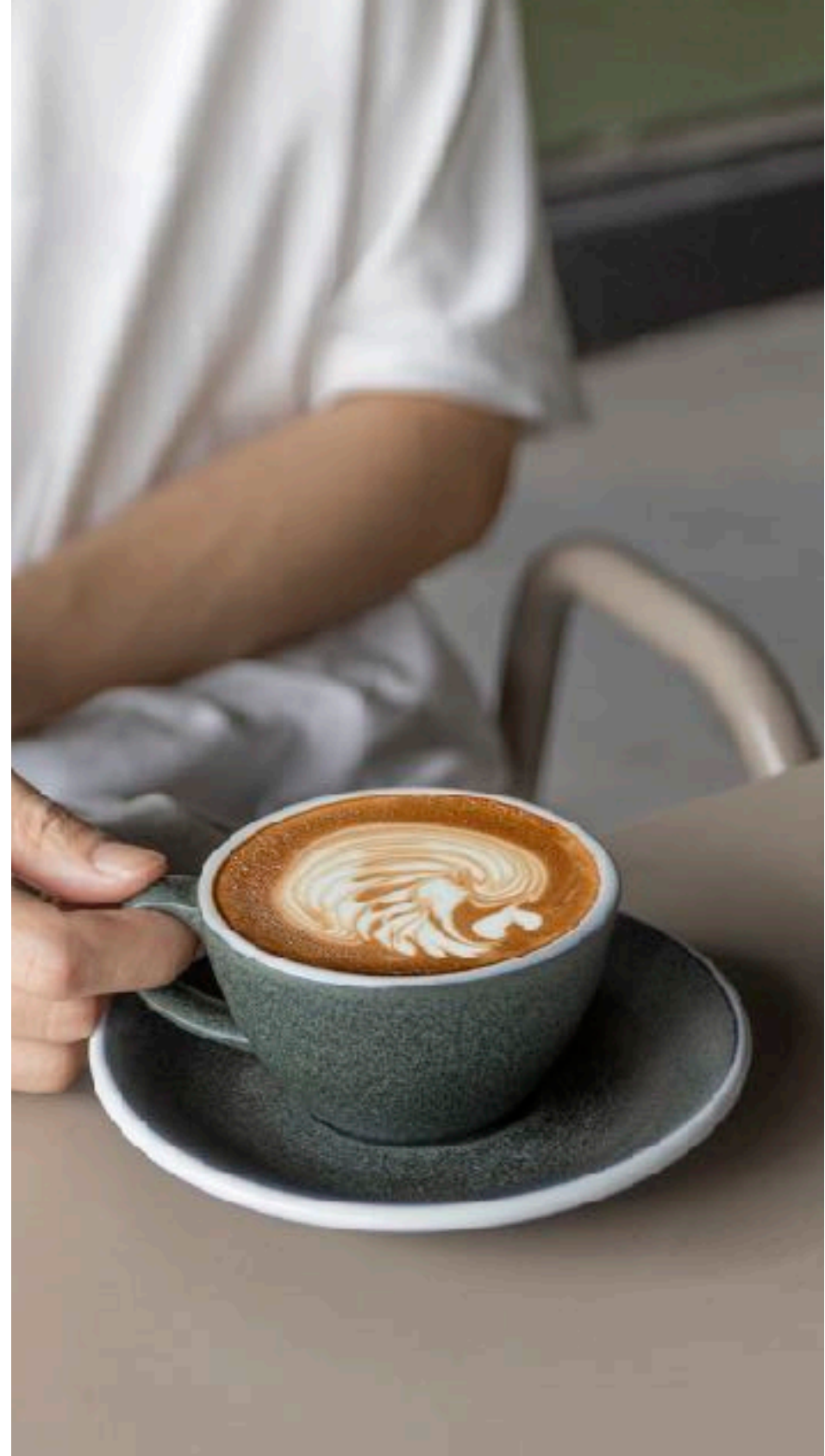
dishwasher safe



microwave safe



oven safe
220C max





WPM
WELHOME PRO

X

LOVERAMICS

Latte Art Set

Loveramics collaborates with WPM to create this limited Latte Art Set. Features 1 x Egg 300ml Cup and Saucer in never released before. The cup is gifted with a WPM pitcher of matching colour, the Army Green.

Apart from Home Coffee Machines, WPM makes pitchers loved by latte artists around the world, they are often seen in competitions. Both of us are Hong Kong based companies, and so we decide to crossover on this special set. The colours are food grade and comes in good durability.



C088-X014A

WPM x Loveramics Latte Art Set (Box of 4)

L20 x W16 x H28.5 cm

wt: 1550 g

Special edition,
matte green colourway
of competition cups.



WPM's signature
slanted latte art
pitcher with
unique angle of
pour.



Round spout
enabling an easy
pour, creating clean
cut lines.



cup and saucer

mailing box



easy shipping box, customised experience.
inquire for added services.





the official
cups of
World Latte
Art
Championships
2015-2022



A collection of several glass cups with a twisted, faceted design, arranged on a light-colored surface. The cups vary in size and are shown from different angles, highlighting their unique texture and shape. The text 'twisted glass' is overlaid in a large, white, sans-serif font.

twisted glass

It has a thickness of 5mm, which retains heat extremely well. It has an interesting twisted exterior that refract light differently, with a curved interior that has the same feature as our porcelain cups. The continuous curve let the crema develop fully and gives an amazing mouth feel.





twisted glass made by machine for ultimate consistency, strength, 100% recyclable and non porous material



great for espresso / cortado / piccolo / regular cappuccino or cool drink.



thickness of 5mm, which retains heat extremely well

stack well on top of
your machine





180ml & 120ml fit in perfectly
with our Egg 14.5cm saucer
and our Tulip 14cm saucer

70ml fits in perfectly with
our Egg 11.5cm saucer and
our Tulip 12.5cm saucer

360ml fit in perfectly
with our Er-go! System
12cm round wood plate



New



- G093-21B
- G093-26B
- G093-30B

Twisted Espresso Glass (Box of 6)
L6.6 x W6.6 x H5.8 cm
vol: 70ml wt: 130g



- G093-20B
- G093-25B
- G093-29B

Twisted Cortado Glass (Box of 6)
L7.9 x W7.9 x H7.1 cm
vol: 120ml wt: 236g



- | | |
|------------|-------------|
| C088-46BRE | C088-87BCA |
| C088-42BBR | C088-156BBE |
| C088-48BYE | C088-157BRO |
| C088-52BMT | C088-158BBC |
| C088-50BTE | C088-159BBI |
| C088-54BBL | C088-160BIB |
| C088-44BDE | C088-155BNS |
| C088-40BBK | C088-91BGU |
| C088-85BTP | C088-89BGL |
| C088-38BWH | C088-154BIV |

Espresso Saucer (Box of 6)
L11.5 x W11.5 x H2.0 cm
wt: 140g



- | | |
|------------|-------------|
| C088-28BRE | C088-75BCA |
| C088-24BBR | C088-149BBE |
| C088-30BYE | C088-150BRO |
| C088-34BMT | C088-151BBC |
| C088-32BTE | C088-152BBI |
| C088-36BBL | C088-153BIB |
| C088-26BDE | C088-148BNS |
| C088-22BBK | C088-79BGU |
| C088-73BTP | C088-77BGL |
| C088-20BWH | C088-147BIV |

Shared Saucer (Box of 6)
L14.5 x W14.5 x H2.5 cm
wt: 254g



- G093-19B
- G093-24B
- G093-28B

Twisted Cappuccino Glass (Box of 6)
L8.7 x W8.7 x H8.7 cm
vol: 180ml wt: 283g



- G093-22B
- G093-23B
- G093-27B

Twisted Latte Glass (Box of 6)
L9.2 x W9.2 x H13.3 cm
vol: 360ml wt: 500g



- | | |
|------------|-------------|
| C088-28BRE | C088-75BCA |
| C088-24BBR | C088-149BBE |
| C088-30BYE | C088-150BRO |
| C088-34BMT | C088-151BBC |
| C088-32BTE | C088-152BBI |
| C088-36BBL | C088-153BIB |
| C088-26BDE | C088-148BNS |
| C088-22BBK | C088-79BGU |
| C088-73BTP | C088-77BGL |
| C088-20BWH | C088-147BIV |

Shared Saucer (Box of 6)
L14.5 x W14.5 x H2.5 cm
wt: 254g



D101-30B
Round Wood Plate (Box of 12)
L12.5 x W12.5 x H2.0 cm
wt: 79g





bond

coffee mugs

The BOND features a super “round continuous curve” inside profile that allows the aroma to develop to its fullest. The ultra-thick wall of the cup makes it super durable and maintains the temperature of the coffee. The cup further retains the heat by its heat trap design created by the extra space at the base. The avant-garde handle modifies the cups centre of gravity, giving you balance when pouring your latte art and comfort when drinking.

2023
NEW
COLOURS

the new colours

Having a retail shop in Le Marais, Paris, we were deeply inspired by the french colours. The ever subtle yet stylish way the fashion industry brings, and the inspiration the beautiful city gives you. The 4 new bond mugs are colours we see in the streets of Paris.



the new colours

The 4 new addition glazes will launch in New York Coffee Fest in March 2023. And will be available in our Paris Le Marais Store at the same time.

brick red

charcoal

indigo

mustard



direct drip / aeropress
Coffee on. A warm tea
mug as well.



bond

3 sizes,
9 colours option





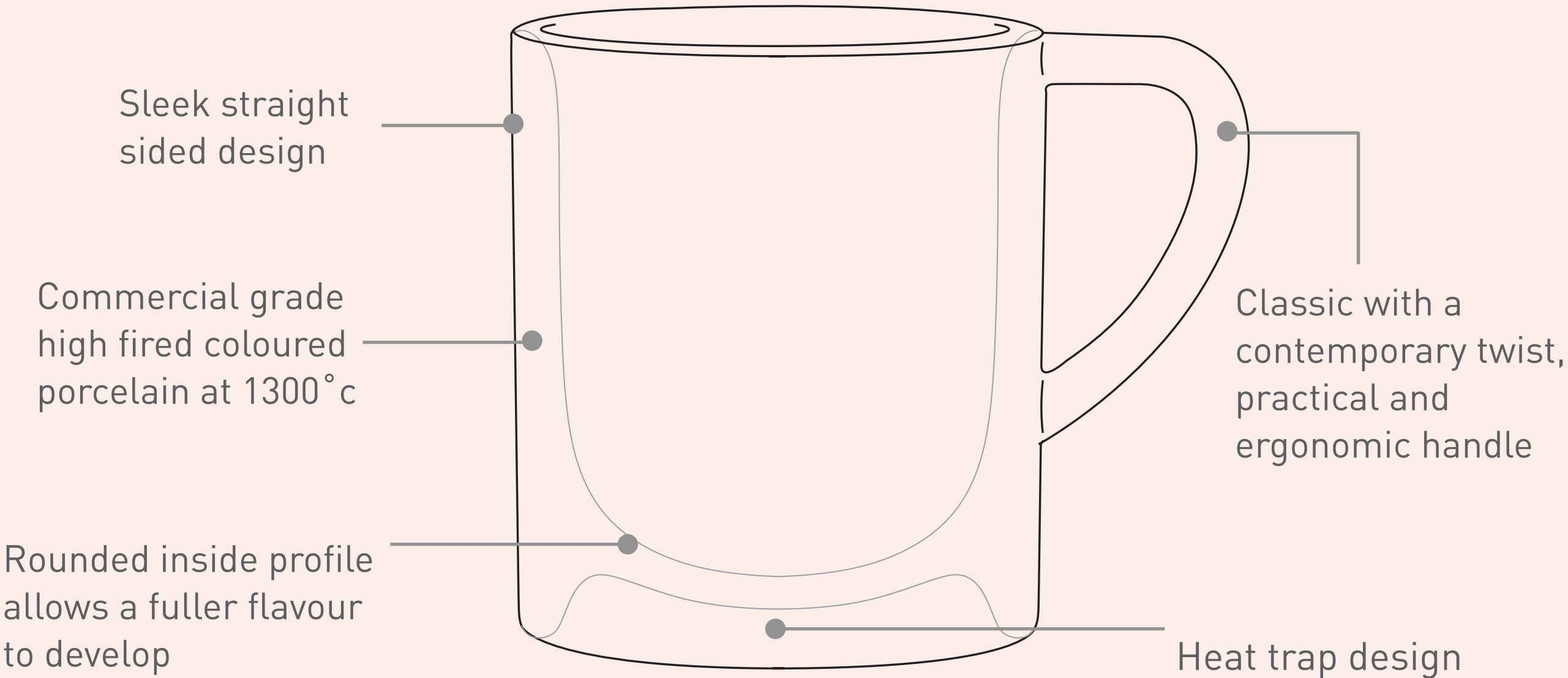
300ml
Mug



150ml
Cappuccino Cup & Saucer



80ml
Espresso Cup & Saucer



regular colours

- | | | | | |
|------------|-------|--------|-------|-------|
| | | | | |
| brown | red | yellow | mint | teal |
| | | | | |
| river blue | denim | black | taupe | white |

2023 new colours

- | | |
|-----------|----------|
| | |
| brick red | mustard |
| | |
| indigo | charcoal |

potters colours

- | | | |
|---------|-----------|---------|
| | | |
| caramel | gunpowder | granite |

* only for starsky and hutch



starsky & hutch



sugar & creamer

the small footprint of the pots minimise space on coffee table.
Also help reduce excessive usage on sugar and milk.





New



C098-150BKR
Mug (Box of 6)
L11.5 x W8.5 x H10.0 cm
vol: 300ml wt: 540 g

New



C098-151BMD
Mug (Box of 6)
L11.5 x W8.5 x H10.0 cm
vol: 300ml wt: 540 g

New



C098-152BIN
Mug (Box of 6)
L11.5 x W8.5 x H10.0 cm
vol: 300ml wt: 540 g

New



C098-153BCH
Mug (Box of 6)
L11.5 x W8.5 x H10.0 cm
vol: 300ml wt: 540 g



- C098-05BRE
 - C098-03BBR
 - C098-06BYE
 - C098-08BMT
 - C098-07BTE
 - C098-09BBL
 - C098-04BDE
 - C098-02BBK
 - C098-01BWH
- Mug (Box of 6)
L11.5 x W8.5 x H10.0 cm
vol: 300ml wt: 540g

- C098-103BRE
 - C098-101BBR
 - C098-104BYE
 - C098-106BMT
 - C098-105BTE
 - C098-107BBL
 - C098-102BDE
 - C098-100BBK
 - C098-108BTP
 - C098-99BWH
 - C098-109BCA
 - C098-111BGU
 - C098-110BGL
- Starsky Mug (Box of 6)
L11.5 x W8.5 x H9.0 cm
vol: 250ml wt: 463g

- C098-116BRE
 - C098-114BBR
 - C098-117BYE
 - C098-119BMT
 - C098-118BTE
 - C098-120BBL
 - C098-115BDE
 - C098-113BBK
 - C098-121BTP
 - C098-112BWH
 - C098-122BCA
 - C098-124BGU
 - C098-123BGL
- Hutch Mug (Box of 6)
L10.5 x W8.0 x H9.5 cm
vol: 250ml wt: 358g



freezer safe



dishwasher safe



microwave safe



oven safe
220C max

Disc



- C098-18BRE
- C098-14BBR
- C098-20BYE
- C098-24BMT
- C098-22BTE
- C098-26BBL
- C098-16BDE
- C098-12BBK
- C098-10BWH

Cappuccino Cup (Box of 6)
L10.5 x W8.0 x H6.5 cm
vol: 150ml wt: 332g

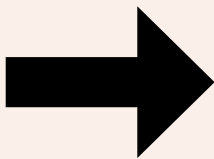
Disc



- C098-19BRE
- C098-15BBR
- C098-21BYE
- C098-25BMT
- C098-23BTE
- C098-27BBL
- C098-17BDE
- C098-13BBK
- C098-11BWH

Cappuccino Saucer (Box of 6)
L14.0 x W14.0 x H2.0 cm
wt: 267g

saucer



Disc



- C098-36BRE
- C098-32BBR
- C098-38BYE
- C098-42BMT
- C098-40BTE
- C098-44BBL
- C098-34BDE
- C098-30BBK
- C098-28BWH

Espresso Cup (Box of 6)
L8.5 x W6.0 x H6.5 cm
vol: 80ml wt: 210g

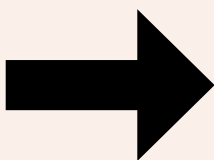
Disc



- C098-37BRE
- C098-33BBR
- C098-39BYE
- C098-43BMT
- C098-41BTE
- C098-45BBL
- C098-35BDE
- C098-31BBK
- C098-29BWH

Espresso Saucer (Box of 6)
L11.5 x W11.5 x H1.5 cm
wt: 167g

saucer



Disc



- C098-135BRE
- C098-137BBR
- C098-134BYE
- C098-132BMT
- C098-133BTE
- C098-131BBL
- C098-136BDE
- C098-138BBK
- C098-130BCR
- C088-01BWH

Sugar Pot (Box of 6)
L6.0 x W6.0 x H5.5 cm
vol: 90ml wt: 180g

Disc



- C098-145BRE
- C098-147BBR
- C098-144BYE
- C098-142BMT
- C098-143BTE
- C098-141BBL
- C098-146BDE
- C098-148BBK
- C098-140BCR
- C088-92BWH

Creamer (Box of 6)
L6.0 x W6.0 x H6.5 cm
vol: 90ml wt: 149g



TENS
HUNDREDS
THOUSANDS

www.tenshundredsthousands.com

X

LOVERAMICS

Weird Coffee Person

Loveramics, in collaboration with Tens, Hundreds & Thousands, are proud to present the third release of the collection of artists & designers glassware in collaboration.

Only a Weird Coffee Person could argue that a cup of coffee is a relaxing hot bath for your brain. Nothing beats the feeling of comfort and coziness your mind feels from the first sip of coffee, right until the last drop. We know we are not alone on this one, so for the next Weird Coffee Person series, we created this relaxed brain in a cup of coffee, while having a cup of coffee.

Designed by the talented Taylor Naoko, a Vancouver-based graphic designer and freelance illustrator. Most of her inspiration stems from the unusual beauty and undervalued details of everyday life and objects, as well as subtle moments seen day to day.



C098-X007A

Weird Coffee Person 300ml Mug (Box of 6)

L11.5 x W8.5 x H10.0 cm

vol: 300ml wt: 540 g



Perfect gift for
coffee geek.





tulip

elegant classic

Designed and crafted to the smallest details, our coffee cups allow every specialty coffee to develop its full flavour well with the best quality meeting the demands of coffee lovers and baristas.



180ml

Cappuccino Cup & Saucer
A stronger cup of cappuccino

80ml

Espresso Cup & Saucer
Single or double espresso

280ml

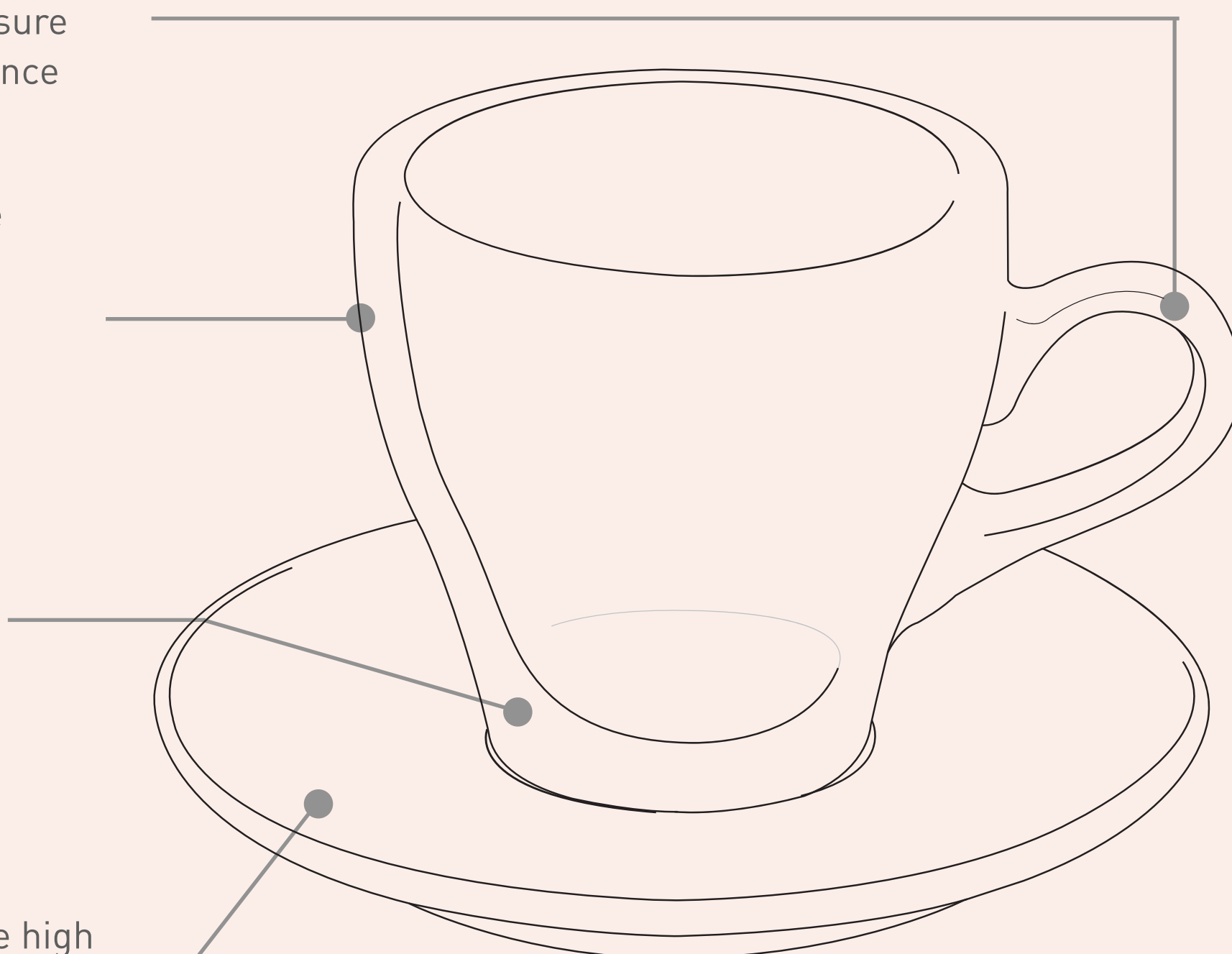
Café Latte Cup & Saucer
Elegant choice of a large cup of
morning coffee latte

Ergonomic handle
and saucer to ensure
an aesthetic balance

Thickest possible
wall keeps
coffee at right
temperature

Rounded inside
profile allows
a fuller flavour
to develop

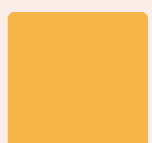
commercial grade high
fired coloured porcelain at
1300°C



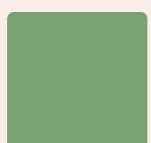
brown



red



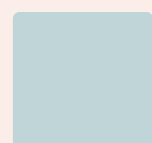
yellow



mint



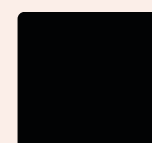
teal



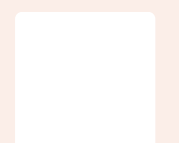
river blue



denim



black



white

3 sizes, 9 colours

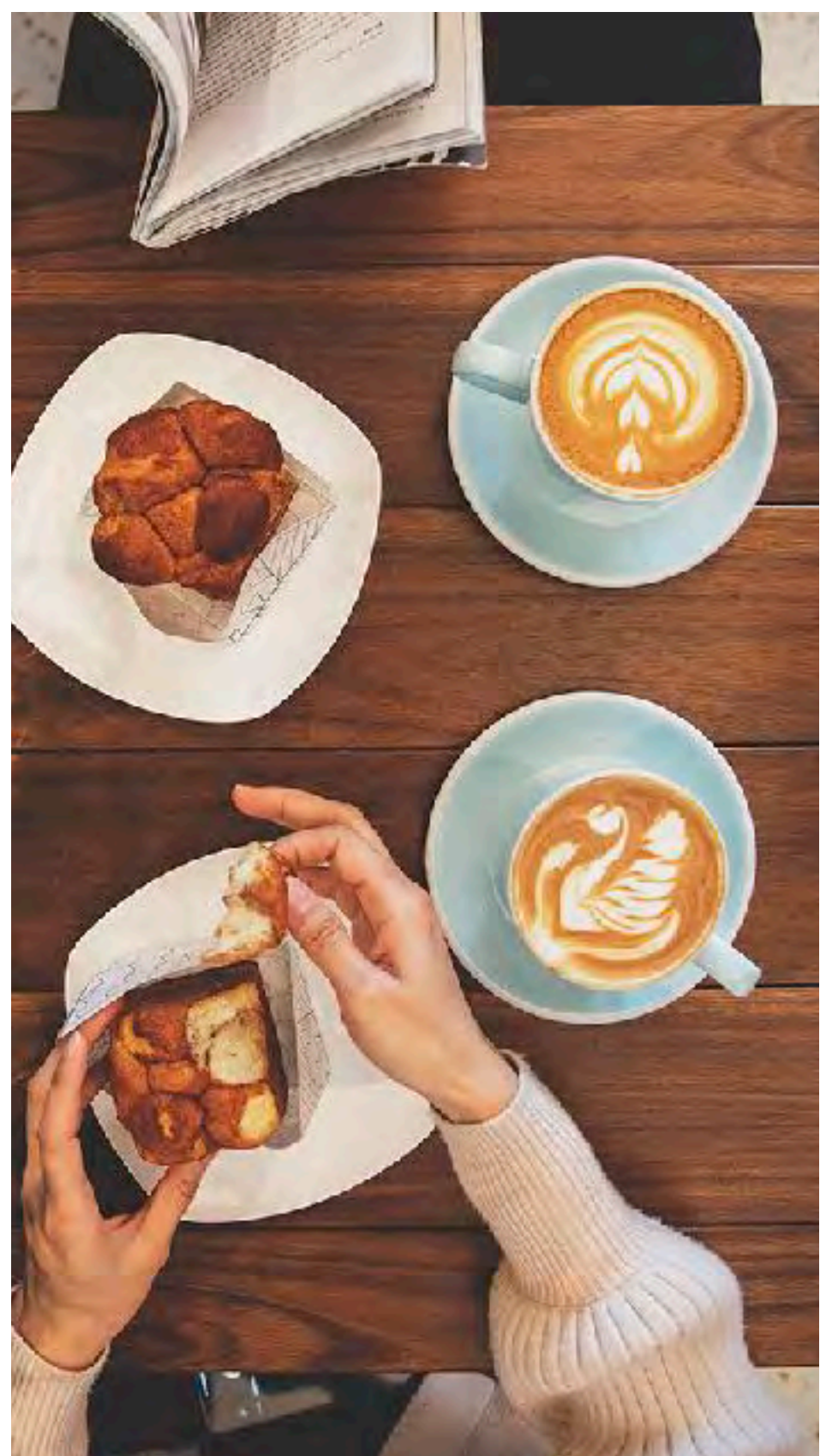




great for latte art as well



rounded inside profile allows
a fuller flavour to develop





- C087-09BRE
- C087-01BWH
- C087-03BBK
- C087-05BBR
- C087-07BDE
- C087-11BYE
- C087-13BTE
- C087-15BMT
- C087-17BBL

Café Latte Cup (Box of 6)
L12.5 x W9.0 x H8.5 cm
vol: 280ml wt: 350g



- C087-27BRE
- C087-19BWH
- C087-21BBK
- C087-23BBR
- C087-25BDE
- C087-29BYE
- C087-31BTE
- C087-33BMT
- C087-35BBL

Cappuccino Cup (Box of 6)
L11.0 x W8.0 x H7.5 cm
vol: 180ml wt: 270g



- C087-45BRE
- C087-37BWH
- C087-39BBK
- C087-41BBR
- C087-43BDE
- C087-47BYE
- C087-49BTE
- C087-51BMT
- C087-53BBL

Espresso Cup (Box of 6)
L8.5 x W6.5 x H6.0 cm
vol: 80ml wt: 140g



- C087-10BRE
- C087-02BWH
- C087-04BBK
- C087-06BBR
- C087-08BDE
- C087-12BYE
- C087-14BTE
- C087-16BMT
- C087-18BBL

Café Latte Saucer (Box of 6)
L15.0 x W15.0 x H2.0 cm
wt: 290g



- C087-28BRE
- C087-20BWH
- C087-22BBK
- C087-24BBR
- C087-26BDE
- C087-30BYE
- C087-32BTE
- C087-34BMT
- C087-36BBL

Cappuccino Saucer (Box of 6)
L14.0 x W14.0 x H2.0 cm
wt: 240g



- C087-46BRE
- C087-38BWH
- C087-40BBK
- C087-42BBR
- C087-44BDE
- C087-48BYE
- C087-50BTE
- C087-52BMT
- C087-54BBL

Espresso Saucer (Box of 6)
L12.5 x W12.5 x H1.5 cm
wt: 170g



freezer safe



dishwasher safe



microwave safe



oven safe
220C max



brewers

flatbed dripper

2023
NEW
COLLECTION

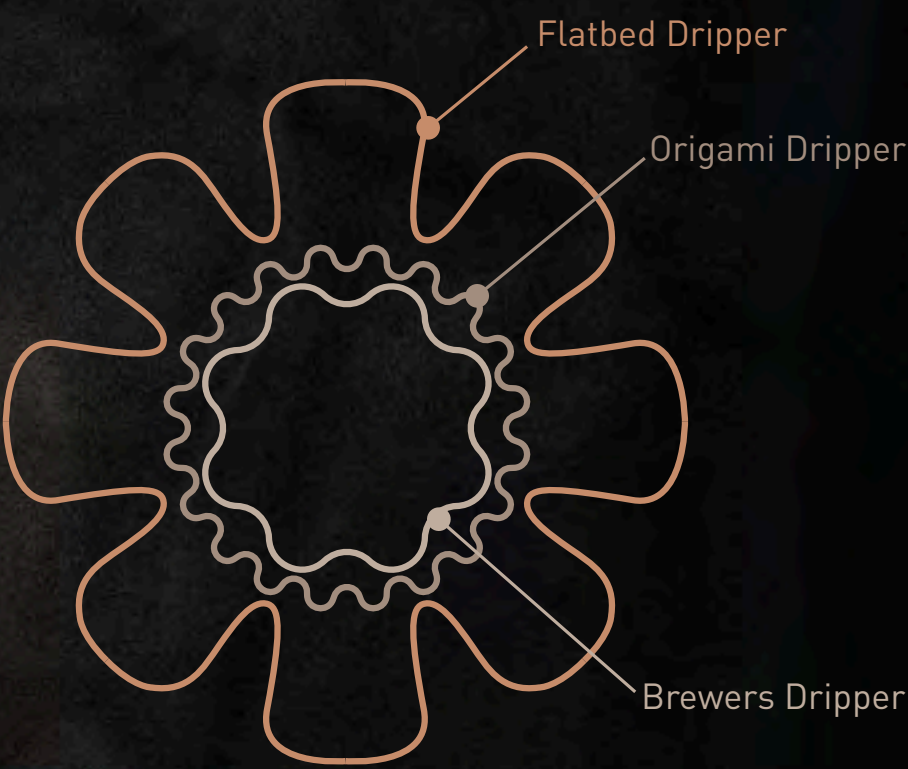
We come up with a whole new coffee dripper in 2023, a fast flowing, flat bed dripper that is heavily engineered to brew different from our existing dripper range.

flatbed dripper

The dripper comes with 13 new colours, to compliment with our Brewers Embossed Tasting Cup as a full pourover experience.



The newly designed embossment forms subtle spacing formed between the paper and dripper, allows coffee to brew fast. The beautifully designed, floral shape increases the area by 120%, which triggers faster brew time.



the flatbed dripper best serves 1 cup,
with classic flat bed wavy paper.



brew test usually done with 18-25g of coffee with 1:12-15 water ratio with fantastic results.



It works with our dripper stand, and our glass jug to form a all you need set for pour over coffee.

New



C099-91APU

Flatbed Coffee Dripper (Box of 4)
L12.0 x W12.0 x H7.0 cm
wt: 240 g

New



C099-90ADP

Flatbed Coffee Dripper (Box of 4)
L12.0 x W12.0 x H7.0 cm
wt: 240 g

New



C099-89API

Flatbed Coffee Dripper (Box of 4)
L12.0 x W12.0 x H7.0 cm
wt: 240 g

New



C099-87AOR

Flatbed Coffee Dripper (Box of 4)
L12.0 x W12.0 x H7.0 cm
wt: 240 g

New



C099-86AYE

Flatbed Coffee Dripper (Box of 4)
L12.0 x W12.0 x H7.0 cm
wt: 240 g

New



C099-85ASA

Flatbed Coffee Dripper (Box of 4)
L12.0 x W12.0 x H7.0 cm
wt: 240 g

New



C099-88AGR

Flatbed Coffee Dripper (Box of 4)
L12.0 x W12.0 x H7.0 cm
wt: 240 g

New



C099-82ACG

Flatbed Coffee Dripper (Box of 4)
L12.0 x W12.0 x H7.0 cm
wt: 240 g

New



C099-83ACL

Flatbed Coffee Dripper (Box of 4)
L12.0 x W12.0 x H7.0 cm
wt: 240 g

New



C099-84ATP

Flatbed Coffee Dripper (Box of 4)
L12.0 x W12.0 x H7.0 cm
wt: 240 g

New



C099-92ACB

Flatbed Coffee Dripper (Box of 4)
L12.0 x W12.0 x H7.0 cm
wt: 240 g

New



C099-93ABK

Flatbed Coffee Dripper (Box of 4)
L12.0 x W12.0 x H7.0 cm
wt: 240 g

New



C099-81AWH

Flatbed Coffee Dripper (Box of 4)
L12.0 x W12.0 x H7.0 cm
wt: 240 g



brewers

glass jug with lid



The shape of the jugs has been designed to give it its own particular character, a shape which is enhanced by the clarity of the glass that doesn't detract from the hue of your coffee within. As the members of Brewers collection, the new jugs has been designed to work with our existing drippers and stands, also the newly developed lids fit all the old and new jugs, aiding the heat retention and also work as a dust cover.





work with different
drippers and stands

lid to aid the heat retention
also work as a dust cover



10cm glass lid match with
straight / zigzag Jug

8cm glass lid match with
tall / belly / optic Jug





double up as a teapot



3mm thick heatproof
boro-silicate glass



perfect size for a double shot espresso

100ml glass jug

made with durable and heat resistant boro-silicate glass



works ideally with
most 02 drip papers

elegant stand keeps
your coffee dripper vertical
and secure while brewing

extra clarity of glass for
you to view the coffee
hues



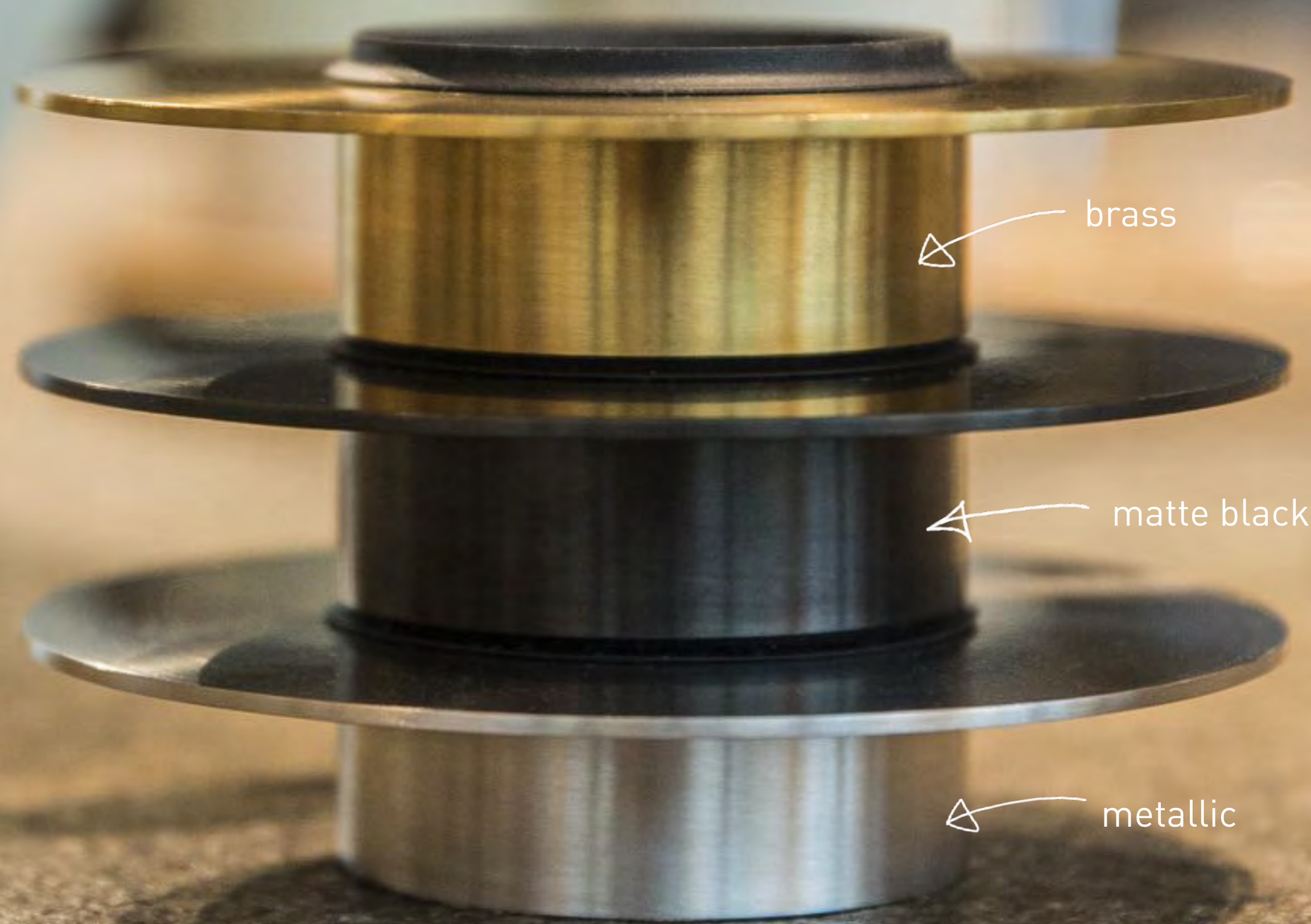
collect all 3 textures to experience
3 different brews and bodies of coffee





decant up to 2 cups of
coffee

3 colour options

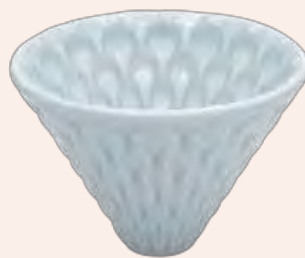




C099-13AWH
Strong Dripper (Box of 4)
L11.5 x W11.5 x H8.0 cm
wt: 240g



C099-14ACG
Smooth Dripper (Box of 4)
L11.5 x W11.5 x H8.0 cm
wt: 240g



C099-15ACL
Mellow Dripper (Box of 4)
L11.5 x W11.5 x H8.0 cm
wt: 240g



C099-19A
Tall Glass Jug (Box of 4)
L13.0 x W9.0 x H11.0 cm
vol: 500ml wt: 270g



C099-20A
Glass Jug (Box of 4)
L14.0 x W9.0 x H9.5 cm
vol: 500ml wt: 255g



C099-75A
Belly Glass Jug (Box of 4)
L14.0 x W10.0 x H10.0 cm
vol: 500ml wt: 210g

New

New



C099-76A
Optic Glass Jug (Box of 4)
L14.0 x W10.0 x H10.0 cm
vol: 500ml wt: 265g

New



C099-77A
Zigzag Glass Jug (Box of 4)
L15.0 x W9.5 x H10.5 cm
vol: 500ml wt: 275g



C099-70B
Glass Jug (Box of 6)
L5.5 x W5.5 x H6.9 cm
vol: 100ml wt: 96g

New



C099-16AME
C099-17ABA
C099-18AMB
Dripper Stand (Box of 4)
L12.0 x W12.0 x H2.5 cm
wt: 180g



C099-78A
Glass Lid (Match with Tall / Belly / Optic Jug)
(Box of 12)
L8.0 x W8.0 x H2.0 cm
wt: 40g

New



C099-79A
Glass Lid (Match with Zigzag / Straight Jug)
(Box of 12)
L10.0 x W10.0 x H1.5 cm
wt: 55g



gift box



freezer safe



dishwasher
safe



microwave
safe



oven safe
220C max

Alongside the forever changing coffee range, Loveramics will honour the golden era of coffee industry with its "gold version" of coffee dripping set.



2023 SPECIAL EDITION

brewers
gold dripper set

Limited in 2000 sets worldwide. Mark your calendar as the set will launch in Shanghai Hotelex in May, 2023



C099-80A
Dripper Set (2023 Special Edition)
wt: 1.20 kg



Plated in PVD coating,
which is food safe.



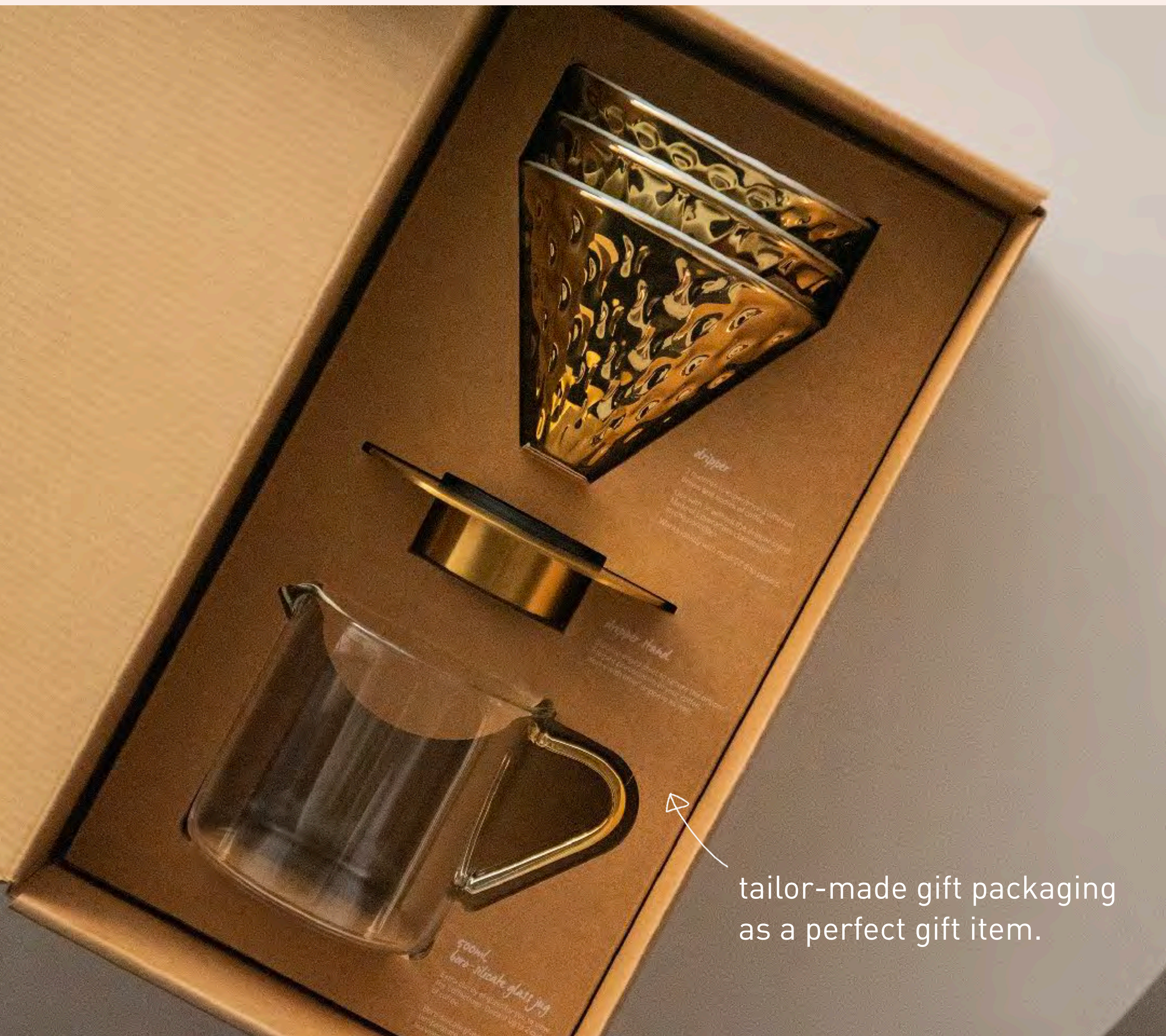
features all 3 speed of our classic coffee
drippers, a matching gold dripper stand,
and a straight boro-silicate glass jug.



works ideally with
most 02 drip papers.



it comes in a fully
recyclable gift box.



taylor-made gift packaging
as a perfect gift item.



At Loveramics, we try to improve the drinking experience and provide a solution to everyday life. The Brewers Collection gives you various experience to enjoy your specialty coffee. We believe this provides the ultimate brewing experience of your specialty coffee, with different aesthetics, and hence providing a unique experience.

brewers nutty tasting cup



200ml



150ml



80ml

200ml cappuccino cup, the best tool to
present a nutty milk coffee



80ml espresso cup, enhances the chocolate
and caramel note of the espresso



hand made, real
pottery studio glaze

best to pair with our
granite colour item and
wood platter

stackable on your espresso machine





300ml specialty jug

150ml cup, so its a perfect
serve 2 cups from the jug



they double up as a flat white/piccolo cup

drip directly and
fit any dripper



FLORAL

comes with a flared opening for you to enjoy the most from the floral smell of coffee such as a typical Kenyan or Ethiopian. The thin edge also provides the elegant experience of drinking.



SWEET

is more suitable for a more balanced coffee such as beans from Costa Rica or El Salvador. It provides a good mouth feel to pour the drinks straight into your sweet spot on your tongue.



NUTTY

creates an aroma collector which traps the smells with more earthy coffee such as a typical Bolivia or Brazil. Its proven the best tool for chocolate, caramel notes because it provides a perfect nose feel.



SPECIALTY JUG WITH 3 COLOURS

CARRARA, BASALT, GRANITE



-  C099-09BGL
 -  C099-05BBS
 -  C099-01BRA
- Specialty Jug (Box of 6)
L8.0 x W7.0 x H12.5 cm
vol: 300ml wt: 289g

150ML TASTING CUPS WITH 3 COLOURS

CARRARA, BASALT, GRANITE



-  C099-12BGL
 -  C099-08BBS
 -  C099-04BRA
- Floral Tasting Cup (Box of 6)
L8.0 x W8.0 x H6.0 cm
vol: 150ml wt: 148g



-  C099-11BGL
 -  C099-07BBS
 -  C099-03BRA
- Sweet Tasting Cup (Box of 6)
L7.0 x W7.0 x H6.0 cm
vol: 150ml wt: 154g




-  C099-10BGL
 -  C099-06BBS
 -  C099-02BRA
- Nutty Tasting Cup (Box of 6)
L7.0 x W7.0 x H6.0 cm
vol: 150ml wt: 141g

NUTTY TASTING CUPS


200ML, 150ML, 80ML IN GRANITE

New




-  C099-73BGL
- Nutty Tasting Cup (Box of 6)
L7.5 x W7.5 x H6.5 cm
vol: 200ml wt: 180g



-  C099-10BGL
- Nutty Tasting Cup (Box of 6)
L7.0 x W7.0 x H6.0 cm
vol: 150ml wt: 141g



-  C099-74BGL
- Nutty Tasting Cup (Box of 6)
L6.0 x W6.0 x H5.0 cm
vol: 80ml wt: 96g



freezer safe



dishwasher safe



microwave safe



oven safe 220C max



brewers embossed tasting cups

Inspired by the amazing colour palette found on the Rainbow Housing Estate of Hong Kong cityscape, the new Loveramics Brewers Embossed Tasting Cups come in 11 beautiful pastel colours that will compliment anyone's interior be it in your own home or with the decor of your coffee shop.

beautiful pastel colours that
compliment interior - both
home or with the decor of
coffee shop



3 professional sizes for both retail
and specialty coffee



work with pastel tone
tableware to colour your table



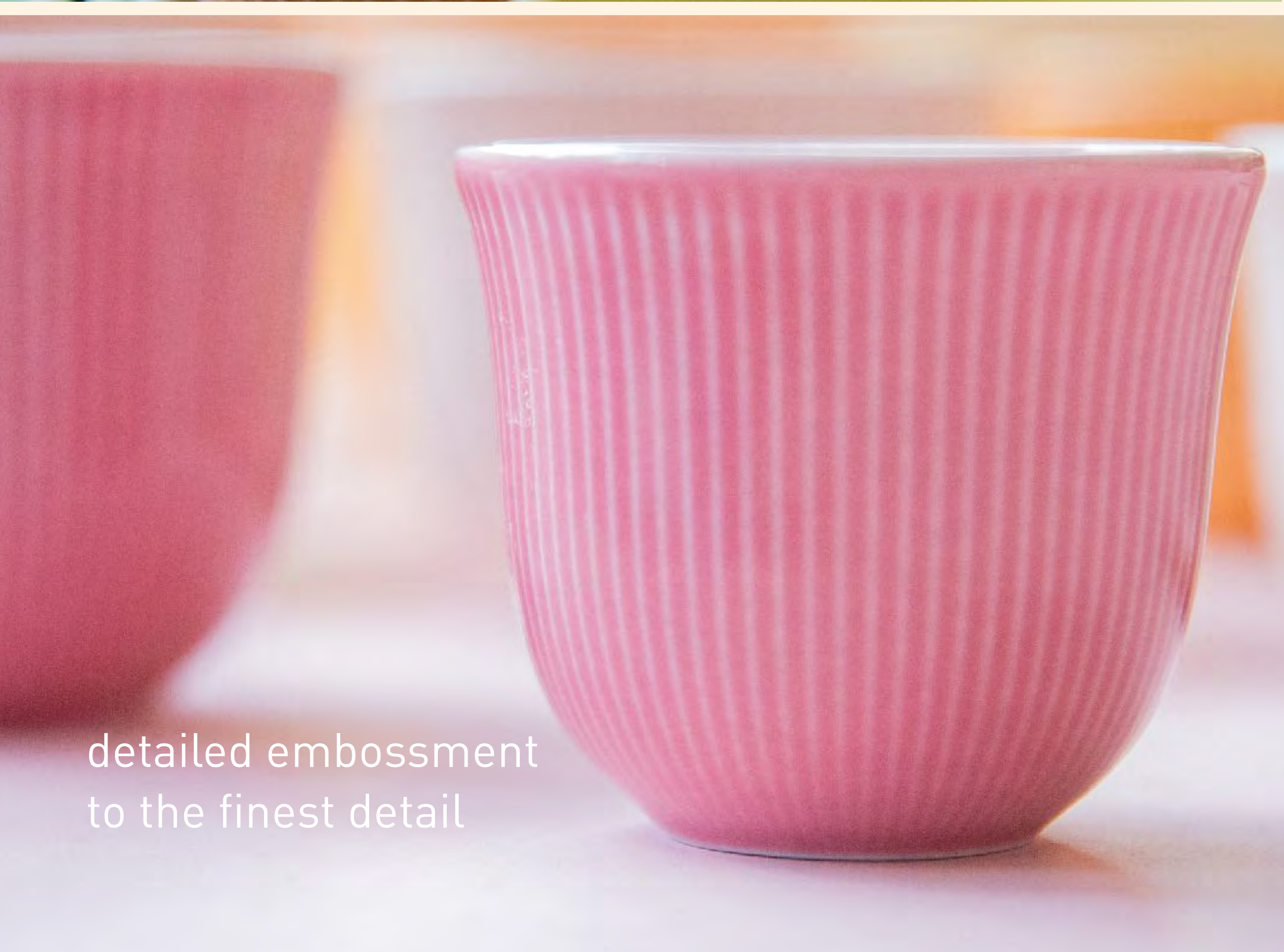
wider opening creates space
for latte art

standalone an elegant and feminine
decoration, double up as candle
holder to decorate interior

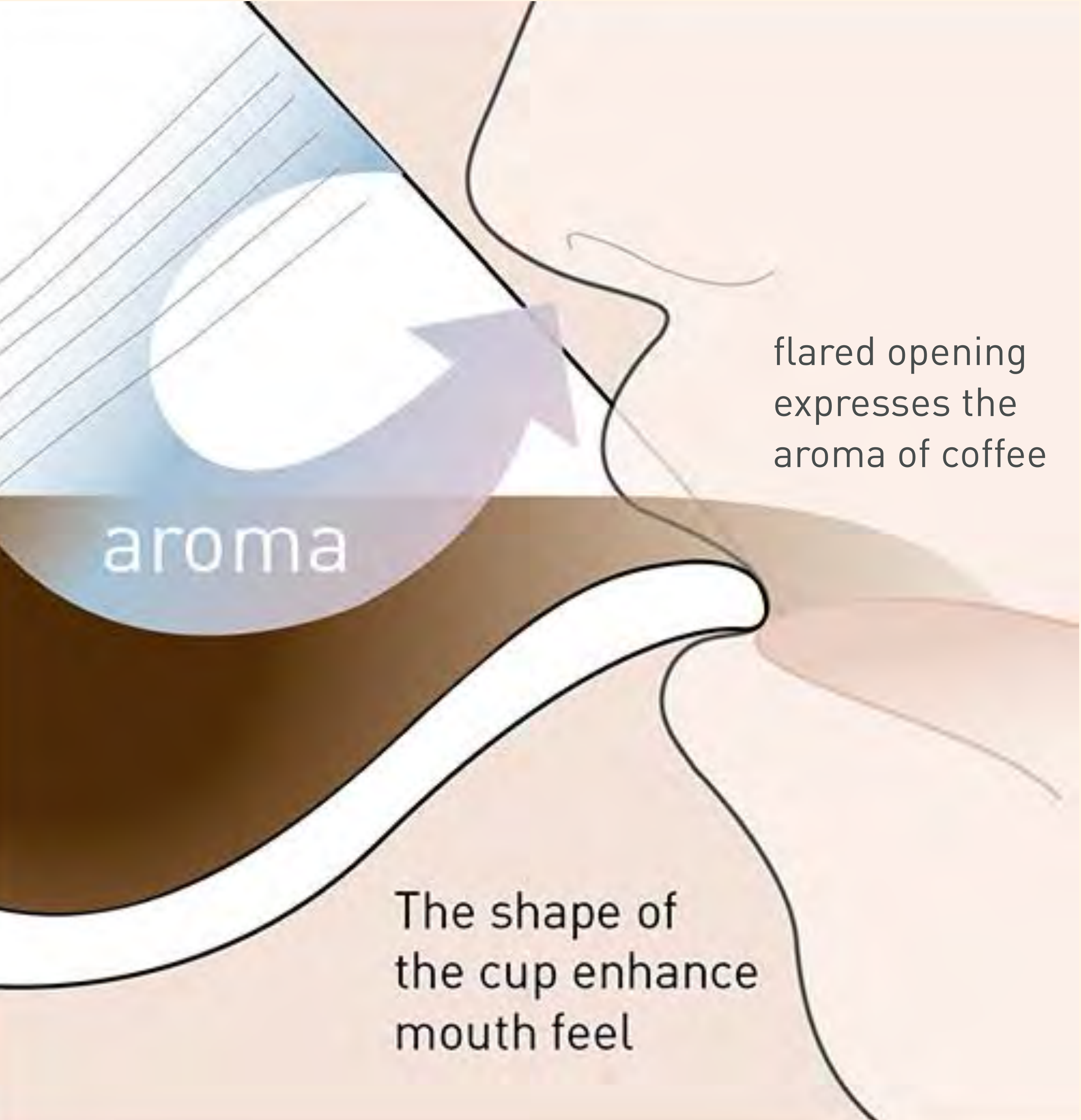




they nest together nicely
to save space



detailed embossment
to the finest detail



flared opening
expresses the
aroma of coffee

aroma

The shape of
the cup enhance
mouth feel




a shape that is accentuated by the
colourful translucent glaze that breaks
on the delicate pinstripe embossment



-  C099-26BWH
-  C099-29BCG
-  C099-32BCL
-  C099-35BTP
-  C099-38BSA
-  C099-41BYE
-  C099-44BOR
-  C099-47BGR
-  C099-50BPI
-  C099-53BDP
-  C099-56BPU
-  C099-59BCB

Embossed Tasting Cup (Box of 6)
L9.0 x W9.0 x H7.5 cm
vol: 250ml wt: 245g



-  C099-27BWH
-  C099-30BCG
-  C099-33BCL
-  C099-36BTP
-  C099-39BSA
-  C099-42BYE
-  C099-45BOR
-  C099-48BGR
-  C099-51BPI
-  C099-54BDP
-  C099-57BPU
-  C099-60BCB

Embossed Tasting Cup (Box of 6)
L7.5 x W7.5 x H6.5 cm
vol: 150ml wt: 165g



-  C099-28BWH
-  C099-31BCG
-  C099-34BCL
-  C099-37BTP
-  C099-40BSA
-  C099-43BYE
-  C099-46BOR
-  C099-49BGR
-  C099-52BPI
-  C099-55BDP
-  C099-58BPU
-  C099-61BCB

Embossed Tasting Cup (Box of 6)
L6.5 x W6.5 x H5.5 cm
vol: 80ml wt: 115g





nomad double walled mug

Life is hectic and we are always 'on the go'. To help you squeeze as much as you can out of your day, Loveramics has designed the Nomad Double Walled Mug so you can do just that, giving you a Barista quality coffee experience wherever you are



double walled

durable inert
materials

easy to clean

designed to give you a great coffee experience with a
low environmental impact.

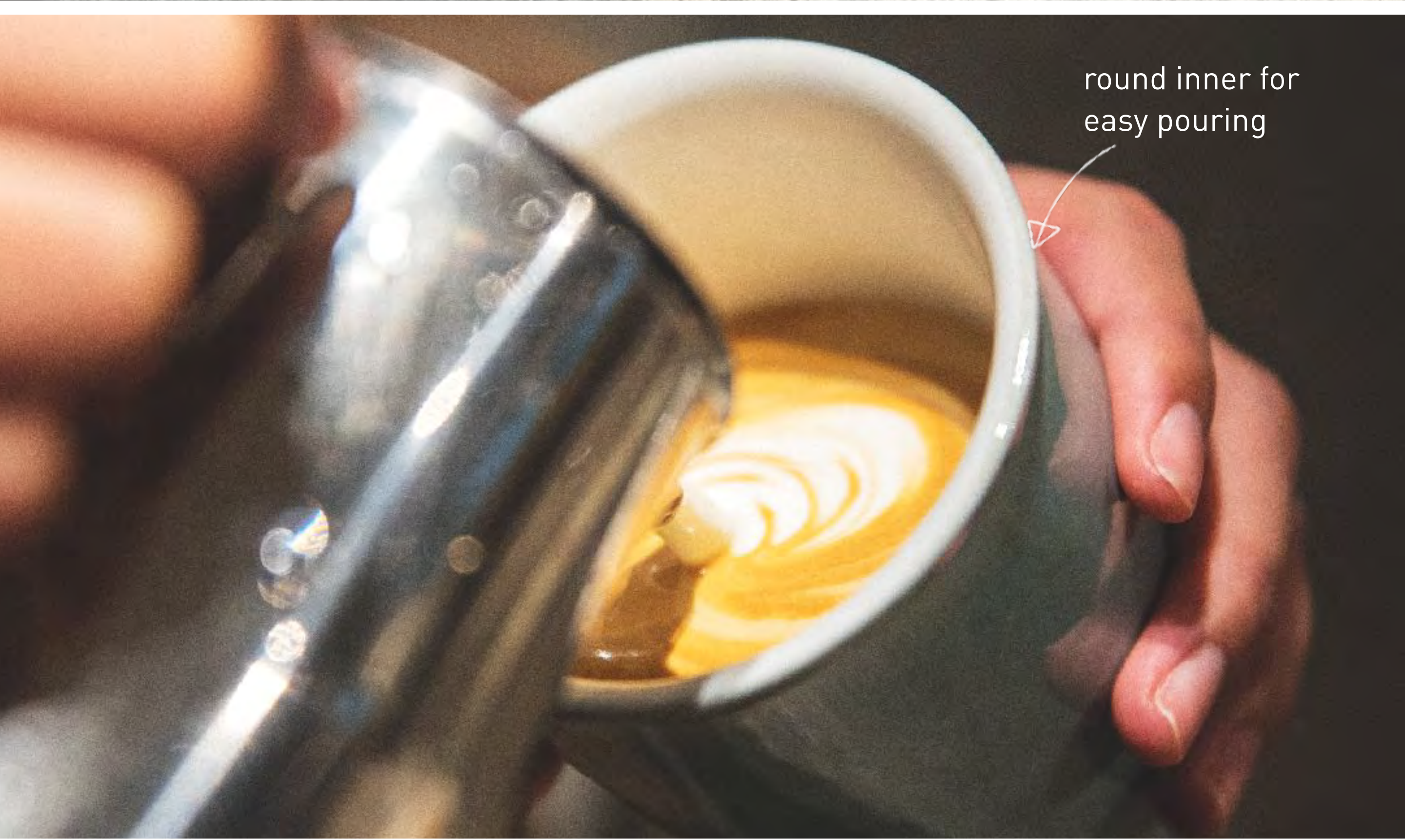
reduce carbon
footprint overtime



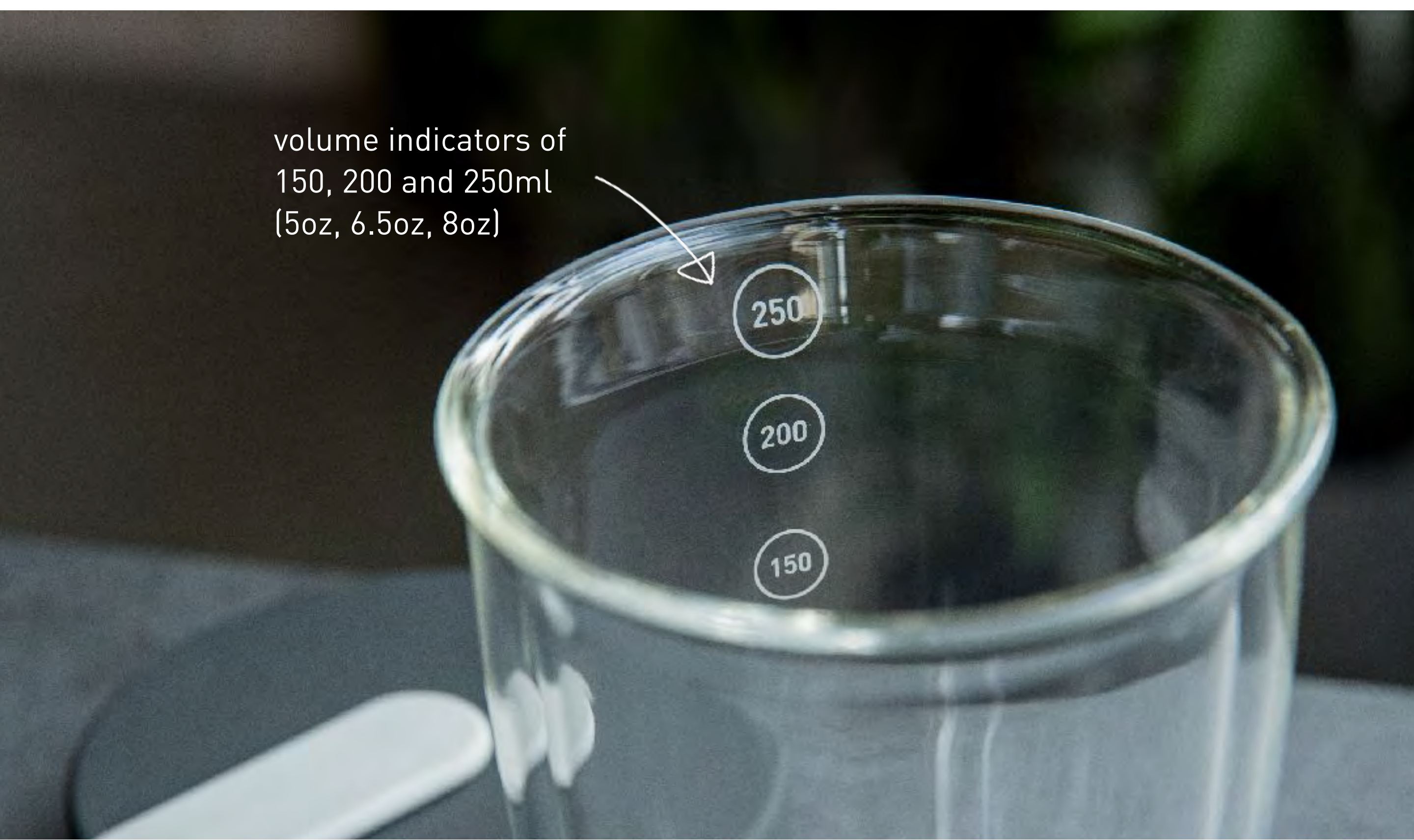
21 colours including the
glass option



directly drip V60 with,
or Aeropress on



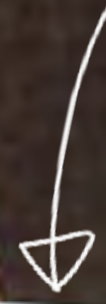
round inner for
easy pouring



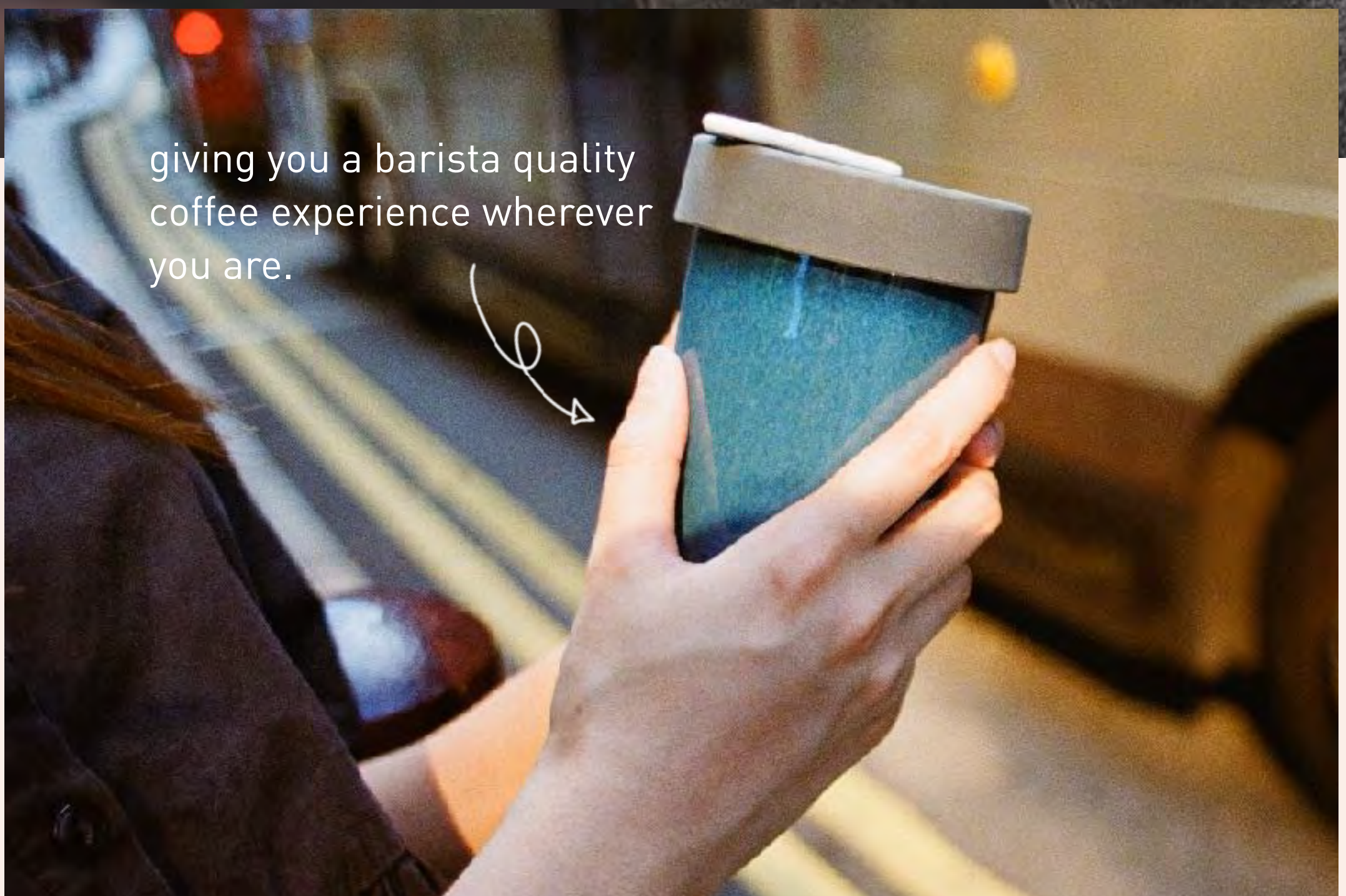
volume indicators of
150, 200 and 250ml
(5oz, 6.5oz, 8oz)



lift with thumb



the double walled design of the nomad mugs helps keep your favourite beverage at its optimum temperature for longer



giving you a barista quality coffee experience wherever you are.



as stylish with or without
the lid

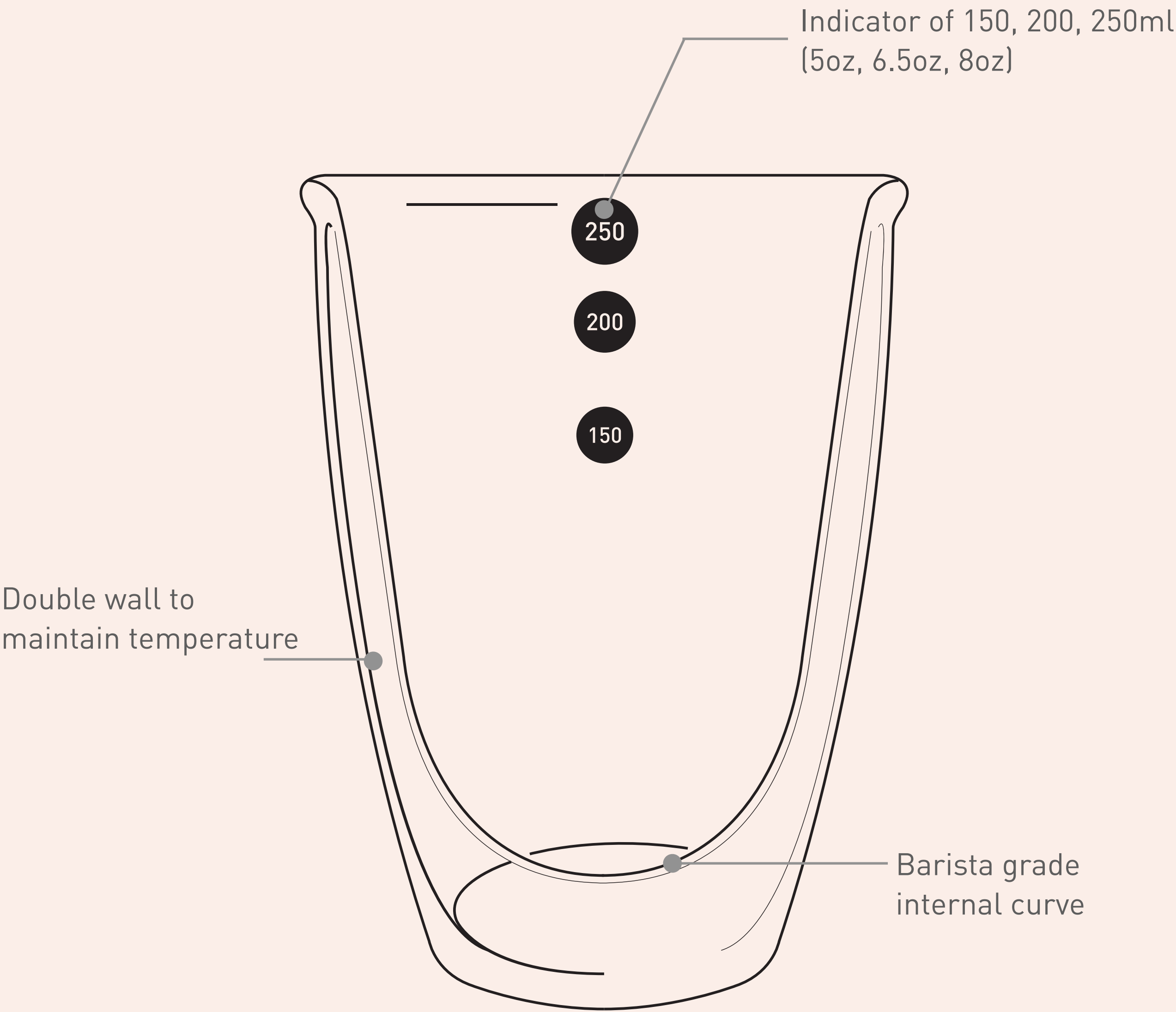


for those who want to
make a difference by
reducing waste



double walled in
real green material





regular colours



brown



red



yellow



mint



teal



river blue



denim



black



taupe



white

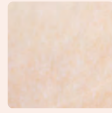
potters colours



caramel



berry



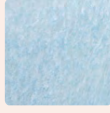
rose



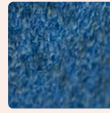
butter cup



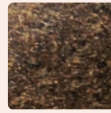
basil



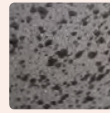
ice blue



night sky



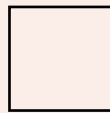
gunpowder



granite



ivory



clear

NOMAD DOUBLE WALLED MUG

(250ml, 8oz)



C111-03ABR
Double Walled Mug (Box of 4)
L8.0 x W8.0 x H11.0 cm
vol: 250ml wt: 280g



C111-05ARE
Double Walled Mug (Box of 4)
L8.0 x W8.0 x H11.0 cm
vol: 250ml wt: 280g



C111-06AYE
Double Walled Mug (Box of 4)
L8.0 x W8.0 x H11.0 cm
vol: 250ml wt: 280g



C111-08AMT
Double Walled Mug (Box of 4)
L8.0 x W8.0 x H11.0 cm
vol: 250ml wt: 280g



C111-07ATE
Double Walled Mug (Box of 4)
L8.0 x W8.0 x H11.0 cm
vol: 250ml wt: 280g



C111-09ABL
Double Walled Mug (Box of 4)
L8.0 x W8.0 x H11.0 cm
vol: 250ml wt: 280g



C111-04ADE
Double Walled Mug (Box of 4)
L8.0 x W8.0 x H11.0 cm
vol: 250ml wt: 280g



C111-02ABK
Double Walled Mug (Box of 4)
L8.0 x W8.0 x H11.0 cm
vol: 250ml wt: 280g



C111-10ATP
Double Walled Mug (Box of 4)
L8.0 x W8.0 x H11.0 cm
vol: 250ml wt: 280g



C111-01AWH
Double Walled Mug (Box of 4)
L8.0 x W8.0 x H11.0 cm
vol: 250ml wt: 280g



gift box



freezer safe



dishwasher
safe



microwave
safe

NOMAD DOUBLE WALLED MUG

(250ml, 8oz)



C111-13ACA
Double Walled Mug (Box of 4)
L8.0 x W8.0 x H11.0 cm
vol: 250ml wt: 280g



C111-15ABE
Double Walled Mug (Box of 4)
L8.0 x W8.0 x H11.0 cm
vol: 250ml wt: 280g



C111-16ARO
Double Walled Mug (Box of 4)
L8.0 x W8.0 x H11.0 cm
vol: 250ml wt: 280g



C111-17ABC
Double Walled Mug (Box of 4)
L8.0 x W8.0 x H11.0 cm
vol: 250ml wt: 280g



C111-18ABI
Double Walled Mug (Box of 4)
L8.0 x W8.0 x H11.0 cm
vol: 250ml wt: 280g



C111-19AIB
Double Walled Mug (Box of 4)
L8.0 x W8.0 x H11.0 cm
vol: 250ml wt: 280g



C111-14ANS
Double Walled Mug (Box of 4)
L8.0 x W8.0 x H11.0 cm
vol: 250ml wt: 280g



C111-12AGU
Double Walled Mug (Box of 4)
L8.0 x W8.0 x H11.0 cm
vol: 250ml wt: 280g



C111-20AGL
Double Walled Mug (Box of 4)
L8.0 x W8.0 x H11.0 cm
vol: 250ml wt: 280g



C111-11AIV
Double Walled Mug (Box of 4)
L8.0 x W8.0 x H11.0 cm
vol: 250ml wt: 280g



C111-21A
Double Walled Glass Mug (Box of 4)
L8.0 x W8.0 x H11.0 cm
vol: 250ml wt: 190g



gift box



freezer safe



dishwasher
safe



microwave
safe

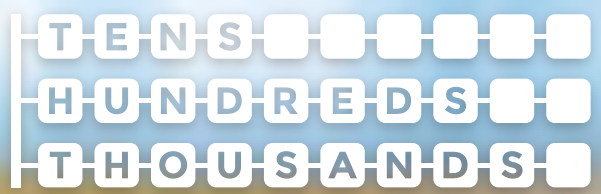


champions signature beans dosing trays

Collaborating with Tens Hundreds Thousands team again, the new Beans Dosing Tray is a perfect tool to weigh and dose coffee into the grinder. Its wide mouth allows putting beans in without them falling out, and to comfortably take out any excess beans with your hands. Its spout helps you pour the coffee beans directly into your grinder.

champions signature

a product by



in collaboration with

LOVERAMICS



Beans Dosing Tray (S)
Capacity 30g



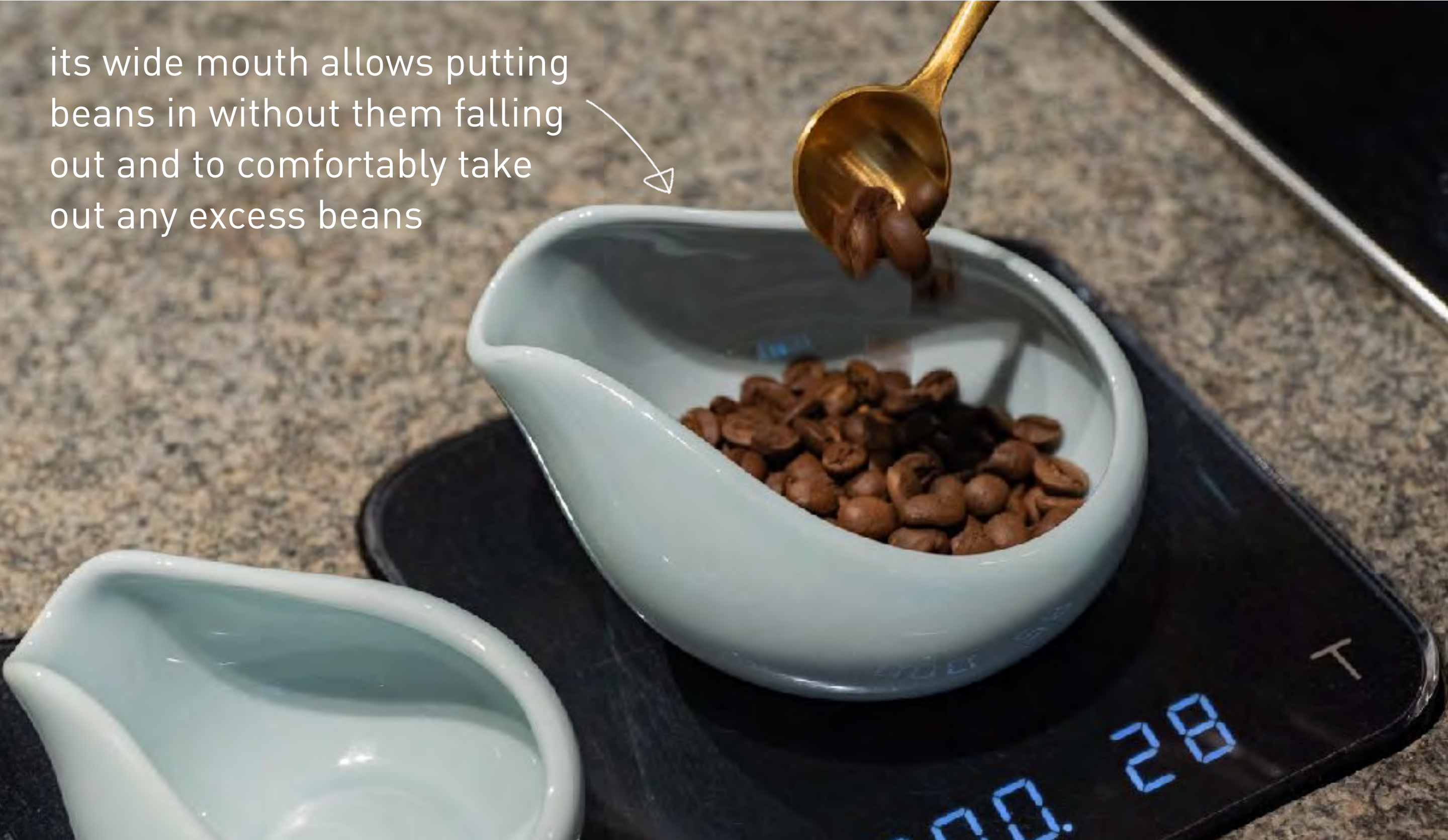
Beans Dosing Tray (L)
Capacity 60g


2 colours option
white / celadon blue



Set of 2 beans dosing
trays with gift box

its wide mouth allows putting
beans in without them falling
out and to comfortably take
out any excess beans





its spout helps pour the
coffee beans directly into
the grinder.

the tray is the perfect tool
to weigh and dose coffee
into the grinder

52.5g



● Set of 2 Beans Dosing Trays (Box of 1)
Beans Dosing Tray (L) L12 x W10 x H6.5 cm
Beans Dosing Tray (S) L9.5 x W8 x H5 cm
wt: 290g



● Set of 2 Beans Dosing Trays (Box of 1)
Beans Dosing Tray (L) L12 x W10 x H6.5 cm
Beans Dosing Tray (S) L9.5 x W8 x H5 cm
wt: 290g



dale harris

champions signature



The Dale Harris Cups is a collaboration between Loveramics and Dale Harris, the 2017 World Barista Champion.

2023
NEW

new crackle glaze

The glaze is special with a crackle surface, with 3 translucent, trendy colours that fits well with the rustic, modern vintage interior trend. They are a prized, pottery glaze that can only be achieved in small studio.



new crackle glaze

The range has a vast upgrade with potters colours in 3 new "Crackle Glaze". The glaze is deliberately formulised to be crackle as an art glaze.



The collection now comes in 200ml, 150ml and 80ml for different types of drinks. They are designed to work optimum with Dale’s recipes and they comes with Loveramics’ signature, uber-durable body. The internal sphere let the flavours to fully develop, and the cups are great for your professional cafes, or home brewers like you.



A collaboration with 2017 WBC Champ,
Dale Harris

The cups were originally designed and hand thrown by Ben Sutton, a London based potter who is also a close friends with Dale. Dale Harris used them participating coffee competitions and has fallen in love with the aesthetics since. We both love the collection, and decide to manufacture them to as a crossover collection to reach a wider-audience.



pottery prototype
hand thrown by ceramist
Ben Sutton



clear hand thrown style
lines on each cups



backstamp features Dale's autograph,
his winning year, and Ben's potter's stamp



capacity and shape to work
with Dale's coffee recipes



Loveramics signature
uber-durable body.

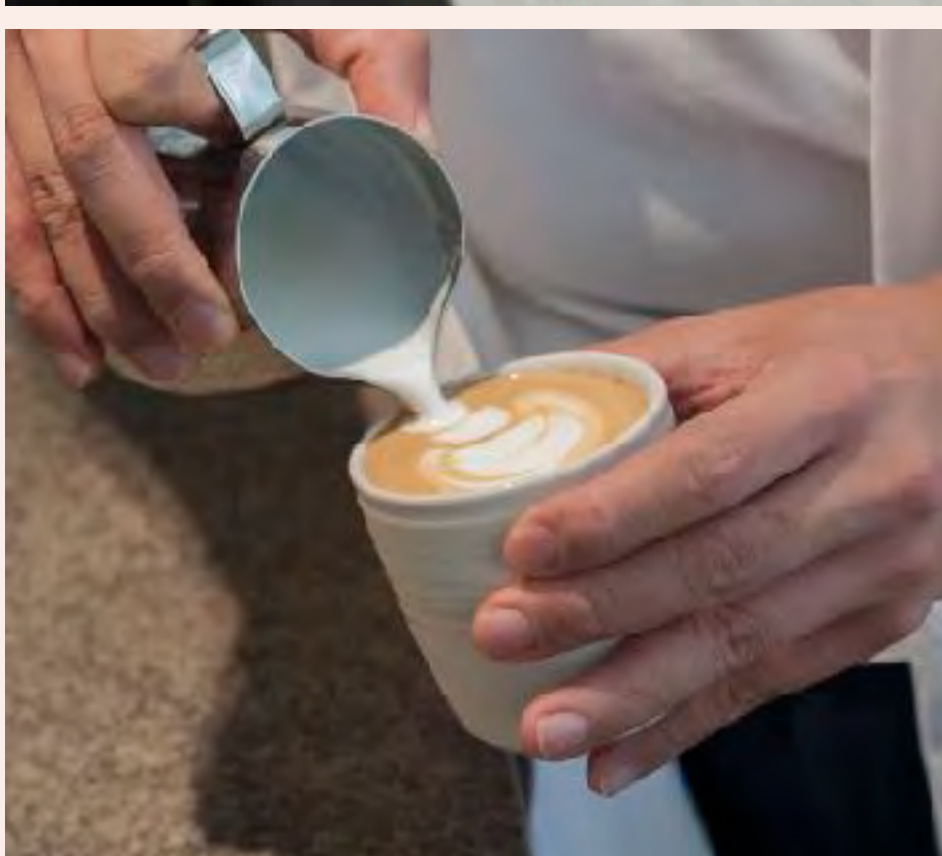
glazed unglazed
contrast. pottery style,
industrial quality



the curved inner surface
aids latte art and crema
retention, allowing the best
presentation of drinks



the cups are durable with thick walls
that retain drink temperature whilst being
comfortable to hold without a handle





- C109-01BCR
- C109-04BCG
- C109-07BCL

Cappuccino Cup (Box of 6)
L7.5 x W7.5 x H7.5 cm
vol: 200ml wt: 245 g



- C109-02BCR
- C109-05BCG
- C109-08BCL

Flat White Cup (Box of 6)
L7.0 x W7.0 x H7.0 cm
vol: 150ml wt: 180 g



- C109-03BCR
- C109-06BCG
- C109-09BCL

Espresso Cup (Box of 6)
L6.0 x W6.0 x H6.0 cm
vol: 80ml wt: 125 g

New



- C109-10BPI
- C109-11BYE
- C109-12BCH

Cappuccino Cup (Box of 6)
L7.5 x W7.5 x H7.5 cm
vol: 200ml wt: 245 g

New



- C109-13BPI
- C109-14BYE
- C109-15BCH

Flat White Cup (Box of 6)
L7.0 x W7.0 x H7.0 cm
vol: 150ml wt: 180 g

New



- C109-16BPI
- C109-17BYE
- C109-18BCH

Espresso Cup (Box of 6)
L6.0 x W6.0 x H6.0 cm
vol: 80ml wt: 125 g



freezer safe



dishwasher safe



microwave safe



oven safe
220C max



roasters

colour changing cupping bowl

As you can see they do change differently, you know the sequence without having too many timers. You won't missed the chance to cup at high temp as it will turn grey. Organising staff will always remember to renew the session when its over."



watch the video

Classic

Colour Changing Cupping Bowl
220ml (7.50oz)

- To follow the SCA standards, available in 2 shapes.
- Make the cupping session more interesting.
- Black interior for blind tasting.
- Classic Loveramics uber durable body and standardized capacity. (200ml /6.5oz and 220ml /7.5oz)



Modern

Colour Changing Cupping Bowl
200ml (6.50oz)

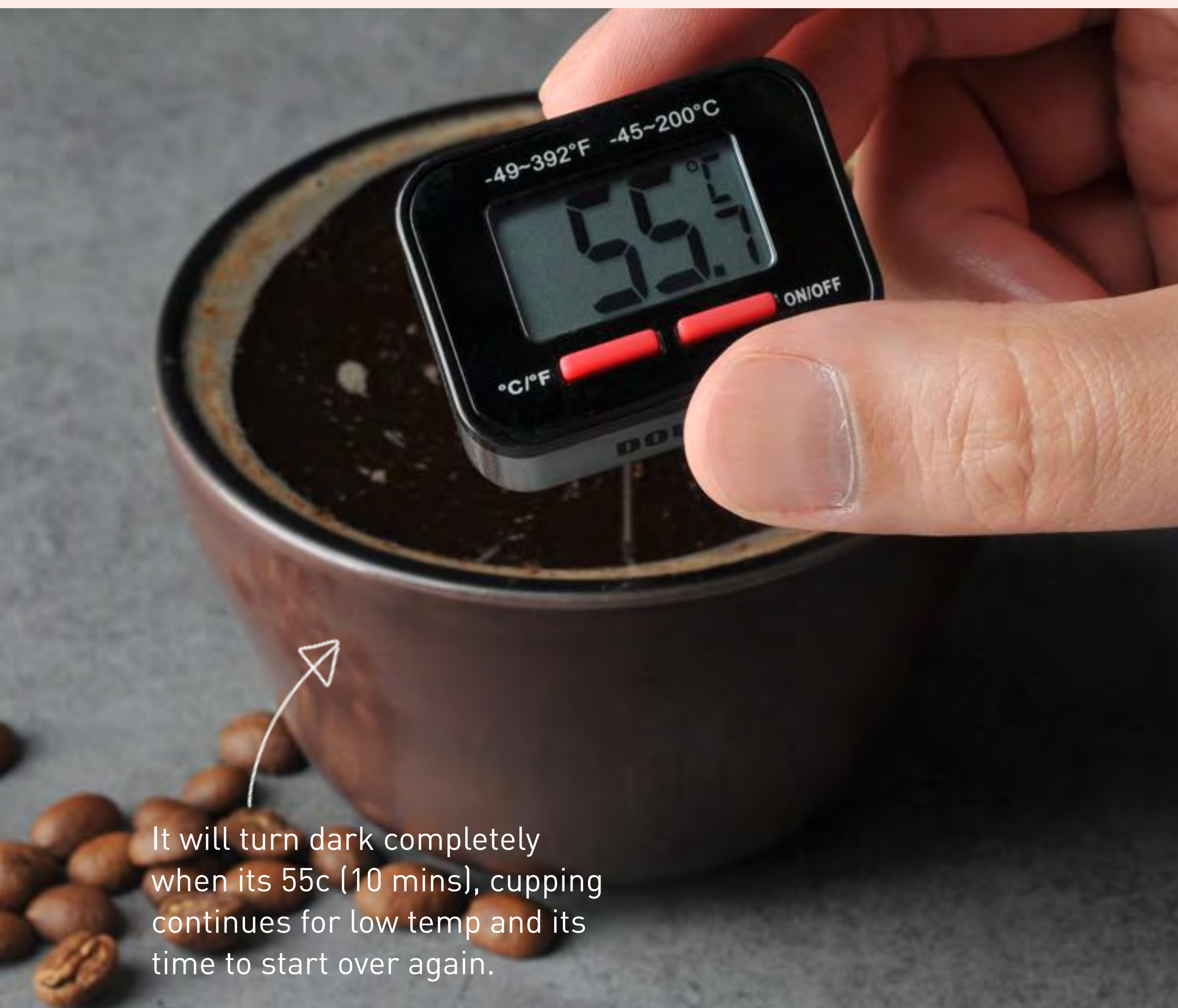


It will elegantly turn white when
you pour 95c water in.



When its light grey, it just
passes 70c (4 mins) you
may start cupping.

When its dark grey, it reaches
60c (8mins)



It will turn dark completely
when its 55c (10 mins), cupping
continues for low temp and its
time to start over again.





C105-11B

Classic Colour Changing Cupping Bowl (Box of 6)

L10.0 x W10.0 x H6.0 cm

vol: 220ml wt: 230 g



C105-12B

Modern Colour Changing Cupping Bowl (Box of 6)

L9.0 x W9.0 x H6.0 cm

vol: 200ml wt: 187 g



er-go! system

designed for
cafe culture

Er-go! System is the extension that gives you millions ways of presenting your food. Consists of plates, oval dishes and wooden trays of various size and colours, the sky is the limit and you can form unlimited combinations. Lay in with the original coloured versions to create even more excitement in your food canvas.



new platters & trays

The new range of Er-go! System Wood Platter exploits the natural beauty of Ashwood, taking that material and crafting it into forms that are both a pleasure to use and wonderful to look at.

Each platter has ergonomic handles at each end and on the sides. This allows you to approach them from any angle and pick them up easily from any surface whether that is at home or in your artisan café.

er-go! system

new platters & trays

33.5cm
Square Wood Platter



35cm x 20cm
Oval Wood Platter



31 x 15cm
Oval Wood Platter



22 x 11cm
Oval Wood Platter



35 x 26cm
Rectangular Wood Platter



25 x 16cm
Rectangular Wood Platter



12.5cm
Round Wood Plate





pick up easily from any surface

33.5cm
square wood platter



accommodate any occasion

35cm
rectangular
wood platter



25cm
rectangle wood platter

22cm
oval wood platter

perfect for home use
or in your artisan cafe



works with a jug with 2 cups
ergonomic handles on the sides



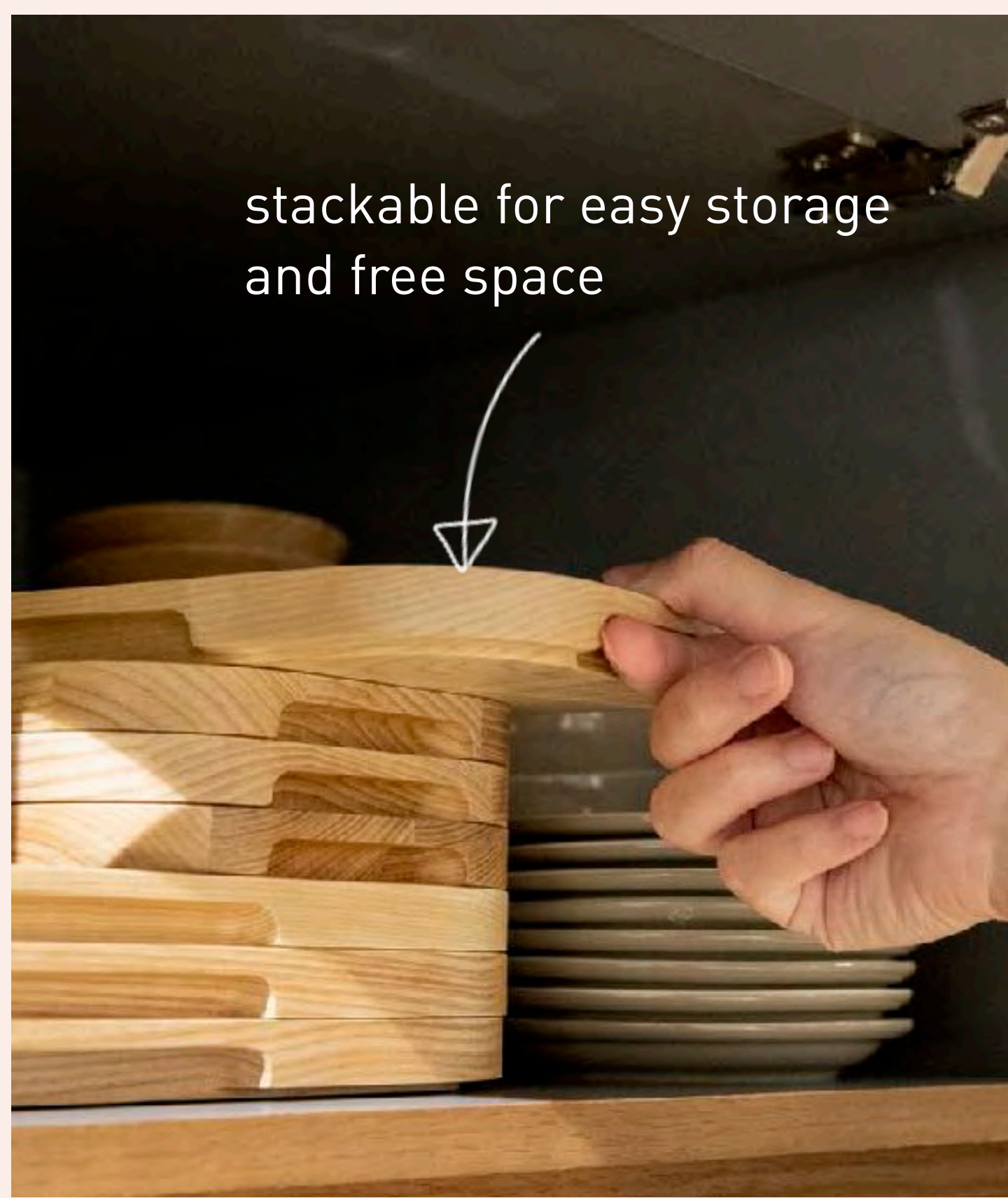
decent for serving
the summer drinks

22cm
oval wood platter



fit in any glass for
iced drinks

12.5cm
Round wood plate



stackable for easy storage
and free space



35cm
oval wood platter

designed for cafe culture

pour over coffee for 2

31cm
oval wood platter



with Ergo System the only limit is your imagination. Use it with our professional coffee cups to create your food and beverage art.



let our food artists join in with the creative process to add a new dimension to Ergo collection.



interrelate with one another, that would allow you to be creative with food in multiple ways.



er-go! system



PLATES



D101-01B
Platter (Box of 2)
L33.0 x W33.0 x H2.5 cm
wt: 1410g



D101-02B
Dinner Plate (Box of 6)
L26.5 x W26.5 x H2.5 cm
wt: 950g



D101-25B
Salad Plate (Box of 6)
L23.0 x W23.0 x H2.5 cm
wt: 630g



D101-03B
Salad Plate (Box of 6)
L20.0 x W20.0 x H2.0 cm
wt: 420g



D101-26B
Side Plate (Box of 6)
L18.0 x W18.0 x H2.0 cm
wt: 320g



D101-04B
Side Plate (Box of 6)
L15.0 x W15.0 x H2.0 cm
wt: 230g



D101-05B
Sauce Dish (Box of 6)
L10.0 x W10.0 x H2.0 cm
wt: 95g

OVAL PLATES



D101-09B
Turkey Platter (Box of 2)
L43.0 x W34.0 x H3.0 cm
wt: 1920g



D101-10B
Fish & Chip Plate (Box of 2)
L31.0 x W27.0 x H3.0 cm
wt: 1080g



D101-11B
Fish Plate (Box of 4)
L37.0 x W20.0 x H2.0 cm
wt: 970g



D101-12B
Vegetable Plate (Box of 6)
L31.0 x W20.0 x H2.0 cm
wt: 675g



D101-13B
Oval Plate (Box of 6)
L28.0 x W15.5 x H2.0 cm
wt: 590g



D101-14B
Oval Plate (Box of 6)
L18.0 x W10.0 x H2.0 cm
wt: 190g



freezer safe



stackable



dishwasher safe



microwave safe



oven safe
220C max

BOWLS



D101-21B
Soup Plate (Box of 4)
L20.0 x W20.0 x H5.0 cm
vol: 925ml wt: 585g



D101-28B
Soup Plate (Box of 4)
L22.0 x W22.0 x H4.5 cm
vol: 1000ml wt: 720g



D101-23B
Low Bowl (L) (Box of 6)
L14.0 x W14.0 x H4.5 cm
vol: 435ml wt: 380g

New



D101-24B
Low Bowl (S) (Box of 6)
L11.5 x W11.5 x H4.5 cm
vol: 295ml wt: 260g



D101-36B
Ramen Bowl (Box of 6)
L17.0 x W17.0 x H8.0 cm
vol: 865ml wt: 584g



D101-22B
Cereal Bowl (Box of 6)
L14.0 x W14.0 x H7.5 cm
vol: 600ml wt: 450g



D101-27B
Rice Bowl (Box of 6)
L11.5 x W11.5 x H6.5 cm
vol: 320ml wt: 260g



freezer safe



stackable



dishwasher safe



microwave safe



oven safe
220C max

ACCESSORIES

D i s c



D101-15B
Solid Ash Wood Platter (L) (Box of 6)
L41.0 x W20.0 x H2.0 cm
wt: 760g

N e w



D101-33B
Oval Wood Platter (L) (Box of 6)
L35.0 x W20.0 x H2.0 cm
wt: 442g



D101-16B
Oval Wood Platter (M) (Box of 6)
L31.0 x W15.0 x H2.0 cm
wt: 385g

N e w



D101-31B
Oval Wood Platter (S) (Box of 6)
L22.0 x W11.0 x H2.0 cm
wt: 192g

D i s c



D101-17B
Solid Ash Wood Platter (S) (Box of 6)
L31.0 x W10.0 x H2.0 cm
wt: 350g

N e w



D101-29B
Square Wood Platter (Box of 6)
L33.5 x W33.5 x H2.0 cm
wt: 920g

N e w



D101-34B
Rectangular Wood Platter (L) (Box of 6)
L35.0 x W26.0 x H2.0 cm
wt: 617g

N e w



D101-32B
Rectangular Wood Platter (S) (Box of 6)
L25.0 x W16.0 x H2.0 cm
wt: 267g

N e w



D101-30B
Round Wood Plate (Box of 12)
L12.5 x W12.5 x H2.0 cm
wt: 79g



sales office

Hong Kong

7/F, Fortis Tower, 77 Gloucester Road,
Wanchai, Hong Kong

tel: +852 2115 9028
whatsapp: +852 9544 7185
middle east / Apec WhatsApp
: +852 9545 2742

China

Unit 2703, Tower 1, Excellence Century Center,
Fuhua 3 Road, Futian District,
Shenzhen City, China

+86 755 2238 5095

EU Wholesale

IJsseldijk 29, 7325 WZ
Apeldoorn, Netherlands

<http://eu.loveramics.com>
europa@loveramics.com

USA Wholesale

2500 S Hwy 183, Building 4, Suite 440,
Austin, 78744 TX

tel: +1 (626) 380 5469
message: +1 (626) 380 5469

<http://usa.loveramics.com>
usa@loveramics.com

retail shop

Loveramics Causeway Bay

G/F, 97 Leighton Road,
Causeway Bay, Hong Kong

+852 2915 8018

Sun To Thu 11:00 – 21:00;
Fri To Sat 11:00 – 22:00

<http://www.loveramics.com>

Loveramics Tai Kwun

Shop 104, Barrack Block,
Tai Kwun, Central, Hong Kong

+852 2884 0003

Sun To Thu 11:00 – 19:00;
Fri To Sat 11:00 – 20:00

Loveramics Paris

30 rue des Blancs Manteaux 75004,
Paris, France

+33 01 42 74 89 58

Tue To Thu 11:00 – 19:00;
Fri To Sun 11:00 – 20:00

<http://fr.loveramics.com>

distributorship / wholesale / press

info@loveramics.com

shipment related customer service

cs@loveramics.com

online shop

eshop@loveramics.com

follow us: loveramics



LOVERAMICS

A love for ceramics.