



custom
branding

LOVERAMICS

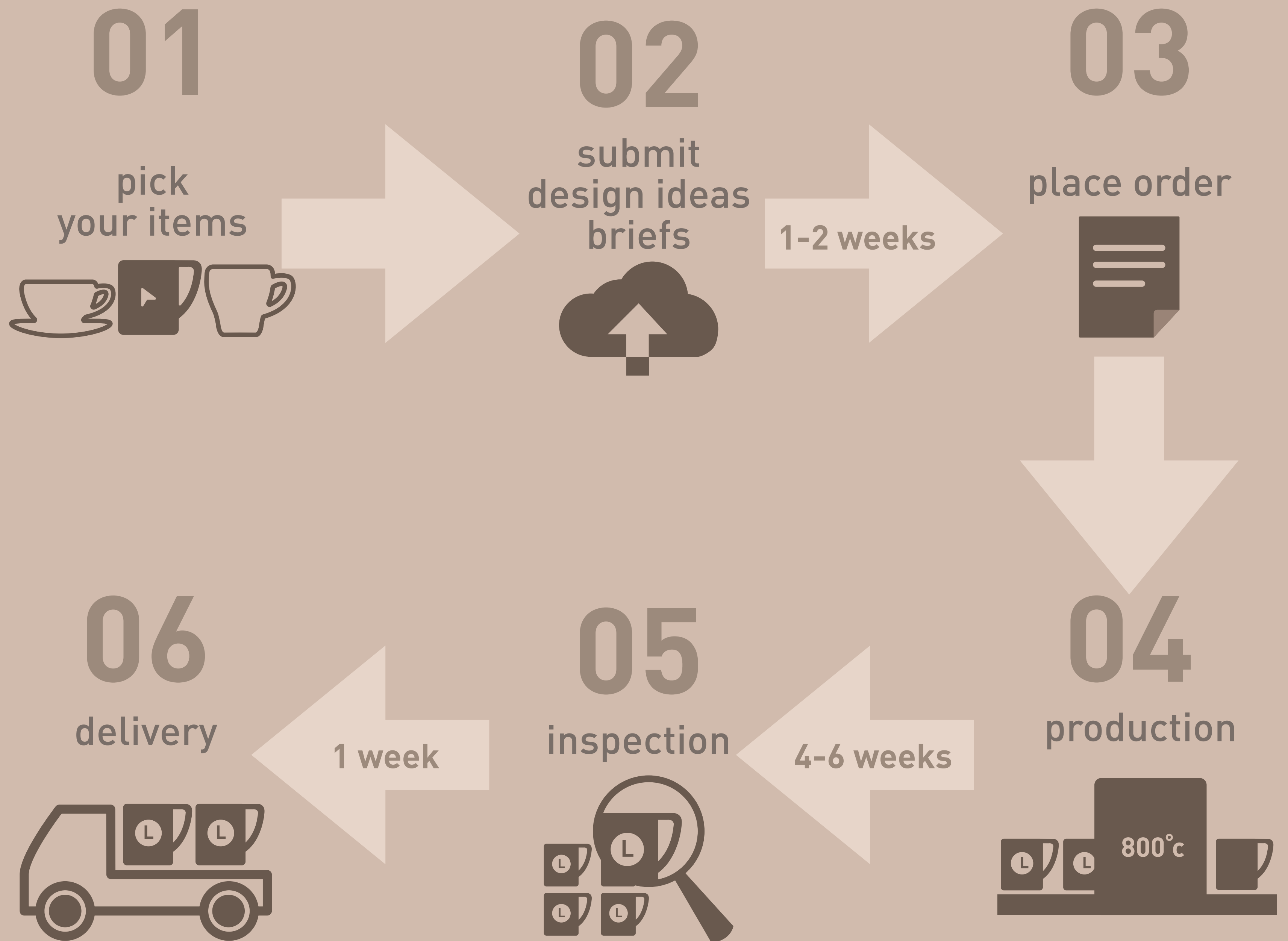


why custom branding?

- unique design no-one else has
- high brand recognition
- easy to roll out during expansion
- great for festivals / events



how does it work?



design

Download our template, fit your logo in, and upload it back to our cloud based sever. Make sure the size, placements and pantones are correctly listed.



scan to download

Design principles:

1. Maximum logo size 4 x 2cm
2. Minimum line thickness 1mm
3. No tonal or gradient colours
4. Best effects with solid colours
5. Avoid similar colours with background. eg: avoid white lines on white cups.
6. Pantones will be best matched. Some colours are not achievable in ceramics printing



decoration

- decal printing



- laser etching



- bespoke glaze / shape combo



decoration 1

decal printing





- can print in white colour
- multiple colours possible
- dishwasher, microwave safe

pros & cons

- hand made, every piece varied
- design limitation of pixels and curvature

regular colours



brown



red



yellow



mint



teal



river blue



denim



black



taupe



white

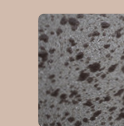
potters colours



caramel



gunpowder



granite



scan / open
with youtube app

decal the process

1. printing

We print your logos with food safe pigment comply with safety standards.

2. craft

The logos are hand applied carefully. The yellow pigment is for positioning and will evaporate once fired.

3. firing

The products are then loaded up in our pottery kiln carefully. They will go through 800°C for about 8 hours. Logos are on-glaze fired and will withstand industrial dishwashers.



decal pricing

| Logo printing charge (per piece) | | | |
|----------------------------------|------|------|------|
| QTY (PCS) | >120 | >300 | >400 |
| +HK\$ | 20 | 15 | 10 |


one time startup cost
(non-refundable)

| | |
|-----------------------|-----------------------------|
| setup fee (1 colour): | HK\$700 |
| additional colour | +HK\$200 per colour (max 3) |

decoration 2

laser etching



- 
- The image shows three sets of ceramic cups and saucers on a wooden table. The top set is a white cup and saucer with 'CAKE BOUTIQUE' etched on the cup. The middle set is a dark blue cup and saucer with 'esso' etched on the cup. The bottom set is a grey cup and saucer with 'CAKE' etched on the cup. The background is a blurred green plant.
- done by robots, consistent
 - multiple materials possible
 - long lasting as its etched

pros & cons

- no colour options
- on flat surface only
- cannot be applied on hard glaze (white / caramel)



porcelain



wood



stainless steel



glass



laser etching

pricing

| Logo charge (per piece) | | | |
|-------------------------|------|------|------|
| QTY (PCS) | >120 | >300 | >400 |
| +HK\$ | 20 | 15 | 10 |

| | |
|---|---------|
| one time startup cost (non-refundable) | HK\$700 |
|---|---------|



decoration 3

bespoke glaze shape combo

(minimum 3600 pcs)



- bespoke shapes



- bespoke glaze / shape combo

glazes

CLAY



Cream Body



White Body

TRANSPARENT



Transparent Glaze

A-1E4C
Glossy

COLOUR GLAZE



Brown

15490
Glossy



Red

16572
Glossy



Yellow

15286
Glossy



Mint

14874
Glossy



Matte Sand

51014
Matte



Teal

17620
Glossy



River Blue

15211
Glossy



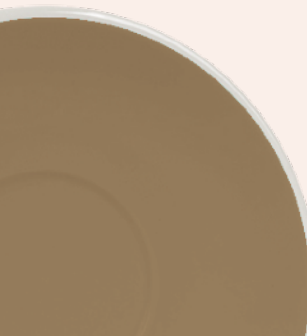
Denim

15509
Glossy



Black

15048
Glossy



Taupe

15846
Glossy



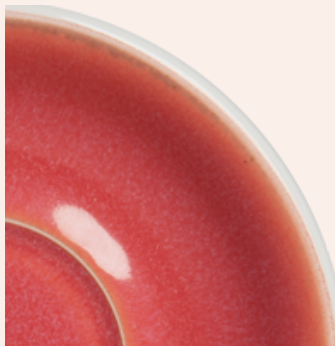
Charcoal

36463
Glossy

REACTIVE GLAZE



Caramel
18885
Glossy



Berry
35176
Glossy



Rose
35194
Glossy



Butter Cup
35153
Glossy



Basil
35181
Glossy



Ice Blue
35112
Glossy



Night Sky
36476
Glossy



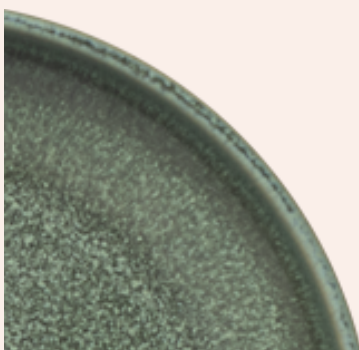
Gunpowder
19458
Glossy



Granite
21201 + 20945
Glossy



Ivory
35159
Glossy



Matte Dark Green
36015
Matte

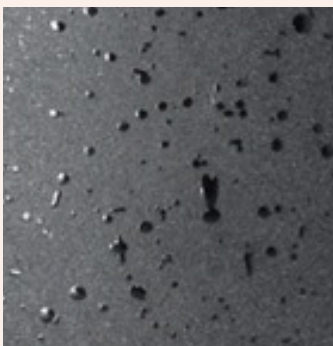


Matte Light Green
36050
Matte

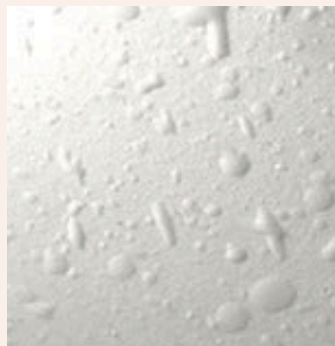


Studio Black
14788 + 713-Q4
Glossy

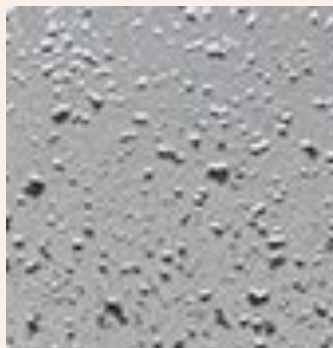
CRAFTED GLAZE



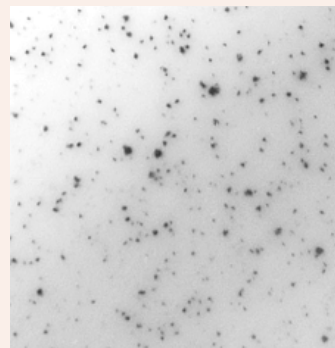
basalt
15048 + 31826
Matte



Carrara
16149 + 31825
Matte



Granite
21201 + 20945
Matte



Speckle
C6278-5
Glossy

WATERY GLAZE



Purple
38729
Glossy



Yellow
38746
Glossy



Celadon Blue
35377
Glossy



Dusty Pink
38737
Glossy



Sand
38752
Glossy



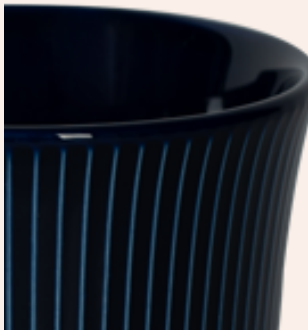
Taupe
38754
Glossy



Pink
38743
Glossy



Green
40043
Glossy



Cobalt
15059
Glossy



Orange
40034
Glossy



Celadon Green
35374
Glossy

CRACKLE GLAZE



Yellow
57189
Glossy



Pink
57179



Charcoal
56170

METAL



Brass
PVD Coated



Matte Black
PVD Coated



Metallic
Polished

GLASS



Clear



Green



Black



Pink

BACKSTAMP STYLE



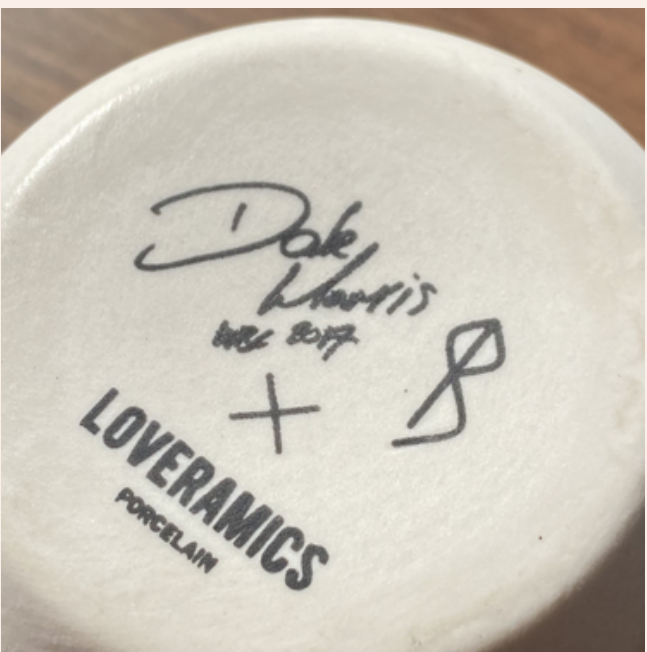
Onglaze
After firing 800c



Underglaze - Reactive
Together firing with the
body 1300c



Underglaze
Put transparent, then firing
with the body 1300c



Silk Screen
Hand applied on unglaze
surface only, no firing
(Dale Harris type)



Inglaze
After firing 1200c
(willow and toile)



Debossed
Embed in the moulds



custom packaging services

(repacking not available in Europe)

form your own set

different sizes
of box available



bundling option

repackaging services for
redemptions and custom gift set



- re-ticketing service to crossover with your brand
- turn them into your own unique gifts / combo

custom made gift box + repackage

(minimum 500 sets)



- have your very own box
- detail constructions

egg cups' direct mailing box

- direct shippable, hugely reduce your warehouse costs
- available in China warehouse



- repack your combo into mailing box according to needs (eg.: black cup, white saucer)



- we help you label your shop / customers name



on demand shipping related service

- palletization



- repacking



- reticketing

inspection

Finished products will be inspected to make sure the logo placement and colours are correct.**

** Since everything is handcrafted, visual and colour may vary within standards and minor defeats will be compromised**



delivery

They are then repacked and sealed in our export boxes and sent to the specialty coffee shops worldwide.



sales office

Hong Kong

7/F, Fortis Tower, 77 Gloucester Road,
Wanchai, Hong Kong

tel: +852 2115 9028
whatsapp: +852 9544 7185
middle east / Apec WhatsApp
: +852 9545 2742

China

Unit 2703, Tower 1, Excellence Century Center,
Fuhua 3 Road, Futian District,
Shenzhen City, China

+86 755 2238 5095

EU Wholesale

IJsseldijk 29, 7325 WZ
Apeldoorn, Netherlands

<http://eu.loveramics.com>
europe@loveramics.com

USA Wholesale

2500 S Hwy 183, Building 4, Suite 440,
Austin, 78744 TX

tel: +1 (626) 380 5469
message: +1 (626) 380 5469

<http://usa.loveramics.com>
usa@loveramics.com

retail shop

Loveramics Causeway Bay

G/F, 97 Leighton Road,
Causeway Bay, Hong Kong

+852 2915 8018

Sun To Thu 11:00 – 21:00;
Fri To Sat 11:00 – 22:00

<http://www.loveramics.com>

Loveramics Tai Kwun

Shop 104, Barrack Block,
Tai Kwun, Central, Hong Kong

+852 2884 0003

Sun To Thu 11:00 – 19:00;
Fri To Sat 11:00 – 20:00

Loveramics Paris

30 rue des Blancs Manteaux 75004,
Paris, France

+33 01 42 74 89 58

Tue To Thu 11:00 – 19:00;
Fri To Sun 11:00 – 20:00

<http://fr.loveramics.com>

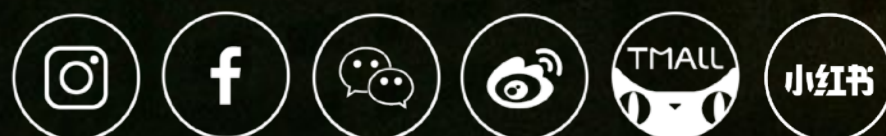
distributorship / wholesale / press

info@loveramics.com

shipment related customer service

cs@loveramics.com

follow us: loveramics



online shop

eshop@loveramics.com

LOVERAMICS

A love for ceramics.